

November/December 2015

# The Bulletin

Volume 69, Number 6

Whole Number 655

- A Sad Time for The Perfins Club
- Big 4 Lines—B139 & B139A
- Washington Bicents
- WEW
- Club Sustaining & Contributing Members
- Auction #145—Prices Realized
- Rausch's Personal Perfin
- Auction #147

## A Sad Time for the Perfins Club

Notes of Executive Board Actions

We have some very important Club business to discuss in this issue of the *Bulletin*. Over the last several months the Executive Board (referred to as the EB from here on) has been wrestling with problems which have the potential to seriously affect Club function. These problems have already taken a serious toll. As of this writing, the EB, which normally has nine members, has been reduced to six.

**President Joe Coulbourne** has resigned his office citing primarily the potential unintended fiscal and legal liabilities inherent in an agreement of the EB voted into effect after the close of the 2012 Convention in Albuquerque, NM. Citing the bookkeeping of the Club subsequent to this agreement, which, while performed in all good faith, may be based on an inaccurate interpretation of the agreement's import with respect to tax law: specifically, the effect of the agreement on the Non-profit status of the Club. Additionally, he cited an inability to resolve amicably an intra-Club, ongoing, very public and vocal feud between two highly productive and valued members.

**Bulletin Editor E. Clark Buchi** has resigned from the EB citing his newness to the Club and a lack of familiarity with the foundation issues involved in the deliberations which would be necessary to resolve the current issues before the Board.

**Vice President John Foster** has resigned. John, in his resignation email noted the "...lack of time and energy... to give this job the full attention which it deserves..."

**Jerry Hejduk, Immediate Past President** has been selected by the EB as **Chairman** to lead us

through the current situation and through the special elections necessary to fill the two unfilled Club Offices.

Beginning shortly after the Albuquerque Convention of 2012 a "vote" taken by the EB set in motion a series of unintended consequences that has resulted in the current state of affairs.

As *The Perfins Bulletin* article (TPB 66(5): 108-109); summarizes the Business Meeting at the 2012 Albuquerque Convention) notes under "Old Business: Promulgation of Guidelines for Club Transit Insurance (CTI)... Members engaged in significant discussion of proposed guidelines..." for the CTI program. The CTI (self-insurance for materials which were involved in Club activities) had been in force for five years at the time. The members voting at the 2007 Business Meeting to implement the program had also overwhelmingly rejected the proposal that all member-to-member mailings should be included in the program. Restating the last: member-to-member mailings were specifically excluded from the CTI program when approved in 2007 unless they were related to official Club activities.

After the necessary set-up information was introduced at the 2012 meeting "...all discussion was related to the relevance of the CTI to the Private Auction, run by Bob Szymanski, who asked for clarification whether the Private Auction is considered to be covered by the proposed CTI guidelines. President Jerry Hejduk said that it was not..." (TPB op. cit.)

Further discussion included the concern that accepting a 5% donation of the revenues from the

(Continued on Page 103)

---

**The *Perfins Bulletin* is the official journal of The Perfins Club - Founded 1943**

---

**2015 OFFICERS, DIRECTORS & MANAGERS**

**EXECUTIVE BOARD**

**PRESIDENT**

Vacant

**VICE PRESIDENT**

Vacant

**SECRETARY**

Ken B. Rehfeld  
P.O. Box 125  
Spokane Valley, WA 99016-0125  
509-924-6375  
[kenrehfeld@comcast.net](mailto:kenrehfeld@comcast.net)  
Term expires 12/31/2016

**TREASURER**

Dan Baugher  
14618 Big Timber Lane  
Chesterfield, MO 63017-5659  
636-537-5365  
[dbaugher@charter.net](mailto:dbaugher@charter.net)  
Term expires 12/31/2015

**DIRECTORS-at-LARGE**

Paul Mistretta  
4148 Commodore Drive  
Atlanta, GA 30341-1533  
678-547-9344  
[paulmistretta70@gmail.com](mailto:paulmistretta70@gmail.com)  
Term expires 12/31/2015

Doug Turner  
P.O. Box 3069  
Ventura, CA 93006-3069  
805-339-9575  
[dturner@west.net](mailto:dturner@west.net)  
Term expires 12/31/2017

Duane Spidle  
1022 Lutheran Way  
Colorado Springs, CO 80915  
719-219-9414  
[duane.spidle@gmail.com](mailto:duane.spidle@gmail.com)  
Term expires 12/31/2016

**IMMEDIATE PAST PRESIDENT  
and  
EXECUTIVE BOARD CHAIRMAN**

Jerry Hejduk  
P.O. Box 490450  
Leesburg, FL 34749-0450  
352-326-2117  
[flprepers@comcast.net](mailto:flprepers@comcast.net)  
Term expires 12/31/2017

**The *Perfins Bulletin* EDITOR**

Vacant

**MANAGERS**

**AUCTION**

Joe Giampietro  
6478 State Road, G-10  
Parma, OH 44134-4166  
440-888-1470  
[mo13jo@aol.com](mailto:mo13jo@aol.com)

**COVER SALES MANAGER**

Millard J. Driscoll  
301 Driver Avenue  
Summerville, SC 29483-2961  
843-875-0847  
[mdriscoll@sc.rr.com](mailto:mdriscoll@sc.rr.com)

**FOREIGN CATALOG CHAIRMAN**

John M. Randall  
2540 Carquinez Avenue  
El Cerrito, CA 94530-1548  
510-233-6647  
[jv.randall@comcast.net](mailto:jv.randall@comcast.net)

**LIBRARIAN**

Doug Cutler  
5943 Gullstrand St.  
San Diego, CA 92122-3819  
248-212-0821  
[sobearcat@hotmail.com](mailto:sobearcat@hotmail.com)

**PERFINS SALES MANAGER**

Robert T. Combs  
P.O. Box 220  
Tome, NM 87060-0220  
505-866-0949  
[stampmgr@hubwest.com](mailto:stampmgr@hubwest.com)

**PUBLICATION SALES MANAGER**

David Lightle  
10616 Cielo Vista del Norte NW  
Corrales, NM 87048-8902  
505-898-8037  
[perfinpaul@msn.com](mailto:perfinpaul@msn.com)

**SUNSHINE**

Francis Stunzi  
37 Smith Street  
Rouses Point, NY 12979-1602  
518-297-2169  
[fastunzi@primelink1.net](mailto:fastunzi@primelink1.net)

**U.S. CATALOG CHAIRMAN**

Steve Endicott  
20 Greensburgh Lane  
San Anselmo, CA 94960-1000  
415-454-1475  
[perfins@gmail.com](mailto:perfins@gmail.com)

**U.S. REVENUE CATALOG CHAIRMAN**

Arthur J. Mongan  
12432 Pretoria Drive  
Silver Spring, MD 20904-1845  
301-572-5459  
[revs.perfins@gmail.com](mailto:revs.perfins@gmail.com)

**The *Perfins Bulletin***

**EDITOR**

Vacant

**ASSOCIATE EDITORS**

Rudy Roy - U.S. Perfins  
Doug Turner - Non U.S. Perfins

**PUBLISHER**

Ken Masters  
816-835-5907  
[krmasters@aol.com](mailto:krmasters@aol.com)

---

The Perfins Club membership is open to all persons interested in the collection and study of Perforated Initials and Insignia in postage stamps. Yearly dues are \$15 for U.S., \$18 for Canada and \$25 for other Non-U.S. Dues may be mailed to the Secretary listed above or by PayPal to [perfin@charter.net](mailto:perfin@charter.net). Since the club is on a July 1 to June 30 dues year, appropriate dues adjustments are made the first year based on the actual date of membership. Annual dues include a subscription to *The Perfins Bulletin*, mailed bulk rate printed matter. Mailing by 1st Class for an additional postage charge. Applications are available at [www.perfins.org](http://www.perfins.org) or from the Secretary listed above.

---

Please submit *Bulletin* articles, news, or advertisements to:

**Paul Mistretta**

**4148 Commodore Drive, Atlanta, GA 30341-1533**

(678) 547-9344 [paulmistretta70@gmail.com](mailto:paulmistretta70@gmail.com)

---

*The Perfins Bulletin* is copyrighted by The Perfins Club. Cited quotations are encouraged. Permission for extensive use of information in the *Bulletin* may be obtained from the editor.

The Perfins Club



[www.perfins.org](http://www.perfins.org)

---

Visit The Perfins Club web site at <http://www.perfins.org> -- Mike Hynes, Webmaster ([mike@precancels.com](mailto:mike@precancels.com))

---

---

## A Sad Time (Continued)

Private Auction might imply that the Private Auction was a Club function, plus other concerns. The primary question of whether the Club would include the Private Auction in its CTI program was tabled *with the encouragement to Club members that they "...send additional comments or suggestions... to Dan Baugher, Treasurer, or to Jerry Hejduk, President."*

On August 18, 2012, barely a week after the Convention ended, Bob Szymanski, Private Auction Manager and then a member of the EB, emailed a proposed quid-pro-quo agreement between the Club and the Private Auction (Document is reproduced in full on Pages 104 and 105.) to the other eight members of the Board.

The cover note in this email stated:

"... After reading the attached Word document, please vote either

[YES] – I wish to see the private auction continue as per the guidelines in the attached 2 page "quid pro quo" document

- or -

[NO] – I do not wish the private auction to continue in this manner.

... Votes must be received by NOON EST on Saturday August 25<sup>th</sup> to be valid."

Shortly after August 25, 2012, he declared that the Board had voted (6-2 with one member abstaining) in favor of ratifying the quid-pro-quo agreement. By the terms of the agreement it was binding on the Club in perpetuity.

Based on the agreement the Club was to receive the following:

I. The Auction would charge a 5% donation of the sale of his/her properties from each seller to be remitted to the Club as a donation to the treasury of the Club.

II. The Auction would collect and contribute 1% of the sale revenues to the Club to be directed to the CTI program.

Several major concessions were made to the Private Auction in that agreement:

1. That the Club would provide insurance coverage on materials stored by the auction manager

at his/her home. (Note this concession is not reflected in the Albuquerque discussion notes at all.)

2. That materials sold or unsold were to be covered by the CTI program while in transit from the Auction to successful bidders or while being returned to the original owners if unsold.

3. That the Auction was 100% under the control of the Auction Manager and not subject to any form of Club review.

4. That the Auction Manager had the responsibility to establish the rules under which the auction was to be managed and these rules were not reviewable by the Club.

5. That "The agreement between the Board of Directors of the Perfins Club and the Private Auction Manager will remain in force until either shall cease to exist."

This agreement has resulted in:

- The Club procuring and financing insurance on the materials in The Auction Manager's possession, and making available it's CTI for the use of the Auction (in opposition to the 2007 vote of the Club members in Convention). (#1 & 2 above)
- The Auction providing to the Club the 5% contributions (paid by consignors) as agreed. The 5% has entered the Club as a gift from the Auction (not from the consignors who actually are required to make the gift). It has been a significant element in the current escrow account funding of Life Memberships and in holding Club dues without increase for 18 years. The auction has also contributed the required 1% fee for transit insurance. (#I and II above)
- The Auction remaining 100% under control of the Auction Manager and Rules for it being established. (#3 & 4 above)
- And, finally, the 2012 agreement remaining in force to the present. (#5 above)

Recently the Club was called on to mediate a dispute between the Auction Manager and a successful bidder that had turned ugly. This dispute was caused by the loss of a set of lots in the mails and the failure of the successful bidder to remit the 1% of the value of the lots to cover the CTI fee

*(Related email on Pages 104 & 105)*

*(Text continued on Page 106)*

---

## A Sad Time (Continued)

August 18, 2012

To: Board of Directors of the Perfins Club

From: Bob Szymanski

During the Perfins club meeting in Albuquerque, Jerry Hejduk presented a proposal for discussion concerning the CTI (Club Transit Insurance). There was much concern and many questions raised about the various club chairs and the private auctions held by Bob Szymanski. During the meeting Jerry Hejduk said that the CTI proposals would not affect the private auctions and were only meant for the club chairs. With this in mind I volunteered to submit to the board a statement of the "quid pro quo" - what the club does for the private auctions and what the private auctions do for the club and ask for a vote of approval to continue the private auctions unimpeded and without change. The following is that "quid pro quo".

### PRIVATE AUCTIONS

#### Club responsibilities:

(1) HAVE INSURANCE AVAILABLE TO COVER MATERIAL SENT FOR THE PRIVATE AUCTIONS WHILE AT MY HOME. At the convention, it was discovered that when all club insurance coverage ended on January 1, 2007, the home insurance coverage was never obtained from another company! At present, Jerry Hejduk and Dan Baugher are searching for insurance to cover not only the private auctions but all club members serving in any capacity with members' or club material at their respective homes.

It is very disconcerting to know that any material at my home during the past 5½ years was not covered! Although I expect this coverage to be promptly obtained, should it not be by the end of the month, I will obtain, and keep for as long as needed, an insurance rider in the amount of \$200,000. on the auction material at my home. I would then bill the club for this coverage. This is the only bill that I would submit to the club, Otherwise, I do not submit for any expenses in the running of the auctions. Lastly, I need a copy of paid coverage sent to me annually as long as the auctions run.

(2) MAINTAIN SHIPPING INSURANCE FOR MATERIAL COMING TO OR SENT FROM MY HOME. This is a 1% insurance charge. These private auctions benefit the club and its members, so this is not a member to member shipment of perfin material that was expressly not approved in 2007 when the self insurance for shipping was initiated.

---

## A Sad Time (Continued)

### Private auctioneer responsibilities

(1) CONTINUE TO REMIT TO THE CLUB 5% OF THE VALUE OF ALL THE PERFIN MATERIAL SENT TO ME. I will only accept collections from members who because of age, illness, need for money or some other compelling reason desire me to handle their collections. I do not advertise nor search out material but only accept what I have been asked to auction. I do not accept material unless the collector or estate agrees to "donate" 5% of the perfin material to the club.

(2) CONTINUE TO COLLECT AND REMIT TO THE CLUB 1% OF ALL MATERIALS SHIPPED TO PURCHASERS. Value is determined by the price paid and charges are 1% of that value. If insurance is desired on material mailed to me, I will determine what the fair market value is and require the 1% to be paid up front to me, whereas if I am sending the material the bill goes with the material. Everyone to whom material is shipped must pay the 1%. The 1% shipping insurance money has been collected for all shipments and I will continue to collect and send these insurance charges to our Treasurer after each auction.

(3) CONTINUE TO RESPONSIBLY RUN THE AUCTIONS. I do this work for the estates and club members who have asked me. I try to do it in such a manner as to bring the best possible return for their material. But, I also do this for the Perfins Club, as it has been the recipient of a large amount of money that allows it to operate in a fiscally sound manner and without having to raise membership costs for the 11 years that the auctions have been held. This is done with the understanding that I have the sole right to determine all auction issues, such as, but not limited to:

- a) what and how I handle the material entrusted to me
- b) how shipments are made
- c) that bidders are members in good standing of one of the world-wide perfin clubs
- d) who may not bid because of any problem in following the rules of the auction
- e) if and when an insurance claim is valid

The auction rules are and will be set by me and have been seen by all. I will e-mail or mail a copy of these this month to all bidders. In the future a set of rules will be sent only to new bidders or when there is a change.

This agreement between the Board of Directors of the Perfins Club and the Private Auctions will remain in force until either shall cease to exist.

---

## A Sad Time (Continued)

(required by the rules of the auction). Without the 1% payment, the Auction could not claim the value of the lost lots from the CTI fund. Despite being an explicitly private function, the Club President was requested to mediate the issue, or charges would be brought before the EB. Suddenly, the Club was being asked to mediate a situation within the explicitly *Private* Auction from which it was previously precluded and thus over which it has, by the terms of the Agreement, no legitimate function.

Prior investigation of the Club's agreement with the Private Auction and this new wrinkle led then President Joe Coulbourn to contact the EB, identifying the issues and enlisting help in getting an amicable (or at least satisfactory) resolution to the issue. However, that review also raised several issues and concerns that contributed to Joe's subsequent resignation.

Following an initial spate of questions, a rereading of the Club's bylaws by the EB raised the single most pertinent question: was the Agreement made in conformance with the bylaws relating to meetings of the EB as laid forth in Article III, Section 3(d) of those bylaws. A quick rereading of the cited section reveals the following specific language:

"Notice of all meetings of the Executive Board shall be sent to all Board Members not less than fourteen days prior to the meeting."

It is clear from the approved annual (2012) meeting minutes that then President Hejduk believed the motion before the Club was tabled and did not envision that a decision would be made until sufficient time had elapsed to allow further input from the membership. Instead of that, we have an Agreement in perpetuity enacted in an unscheduled EB non-meeting, an agreement made even before the minutes of the meeting requesting Club member input, clearly including members not in attendance at the meeting and thus unaware of the issue before the Club, were published in the *Bulletin*.

This vote was not a part of the announced August 9, 2012, Business Meeting held at the Convention, nor was it a follow-on of that meeting because input from all Club members was requested when tabling the discussion at the Convention. And, the vote

made in a non-meeting of the EB (an email) was not appropriately announced at least fourteen days prior.

**Thus the 2012 Agreement sanctioned by the Executive Board of the Perfins Club was agreed to in violation of the bylaws of the Club and is thus void.**

In an appropriately planned conference call (announced October 2, 2015 and held October 19, 2015) the current EB unanimously approved the following:

- The EB unanimously declares that the 2012 Agreement between the Perfins Club and the Private Auction is null and void due to an inherent procedural error in its ratification.
- The EB will allow the insurance procured by the Perfins Club to cover materials maintained at the home of the Private Auction manager pending sale or return to owner to lapse at the end of the current term of the paid premium (November 30, 2015).
- Beginning with closing the books on the currently running (on October 19, 2015) Auction #62, the Perfins Club will no longer accept the 5% gift of sale revenues if made directly from the Private Auction. Sellers may, if they choose, make a contribution to the Club from their revenue from the sale, but this will no longer be, or appear to be, a *required gift* to the Club.
- Beginning with lots from the Private Auction following the currently running (on October 19, 2015) Auction #62, the Perfins Club will no longer extend the Private Auction coverage of materials in the mails under the Club's Transit Insurance program. Such coverage shall be reserved for materials in transit as a function of Club activities only.
- Beginning with the closing of the books on the currently running (on October 19, 2015) Auction #62, the Perfins Club will no longer accept the 1% contribution from the Private Auction to the CTI fund.
- The EB recommends that the Private Auction Manager amend the auction rules because the

(Continued on Page 107)

---

## A Sad Time (continued)

previous two requirements (5% gift to Club and 1% CTI contribution) will no longer apply.

In addition the EB unanimously approved two amendments to the bylaws that are being published in this Bulletin to preclude a similar situation from happening in the future.

The first amendment is:

**Article III. Section 6. Limitation on the actions taken by the Executive Board.** The Executive Board shall pass no resolution nor make any agreement that commits funding or in-kind benefits from the Club to an individual member of the Perfins Club, to a group of members of the Perfins Club, or to the enterprise of a member of the Perfins Club that is not deemed an activity of the Perfins Club. Such commitment of the resources of the Perfins Club shall require an affirmative vote of a simple majority of the full membership to be enacted.

The second amendment is:

**Article III. Section 7. Limitation on members of the Executive Board: avoidance of or appearance of conflict of interest.** Any member of the Executive Board sponsoring an agreement or resolution and who will profit directly either fiscally or in an in-kind manner from that resolution or agreement shall recuse him- or herself from any Executive Board vote to enact that agreement or resolution.

In compliance with the bylaws, these amendments to the bylaws were presented in writing to the EB four days prior to the vote. They were ratified in separate votes (6-0 and 6-0) fulfilling the requirement of a  $\frac{3}{4}$  vote of the Executive Board for ratification.

Respectfully submitted by the Executive Board to the membership. Members: Jerry Hejduk, Chairman; Dan Baugher, Paul Mistretta, Ken Rehfeld, Duane Spidle, Doug Turner.

---

## The Big Four Lines Perfins—B139 & B139A

Steve Endicott (LM#2284)

The perfins B139 and B139A used by the railroad, The Big Four Lines, are two of those patterns that we find in *The Catalog of United States Perfins* [U.S Perfins Catalog] that are very similar in design and size. As perfin collectors we often surmise that some of these similar patterns are just die varieties from a multi-head perforator. But where is the convincing evidence? As your Catalog Chair, I am hesitant to remove a perfin from the U.S. Perfins Catalog without solid evidence.

I was pleased to see the stamp shown nearby at the recent Boxborough, MA Precancel and Perfins Convention. (See photo on page 108.) This stamp is the Special Delivery Scott E15 issued in 1927. It has a heavy ink cancellation that has bled through the stamp; here is what I observe.

The perfin on the left is pattern B139; the one on the right is B139A. The principal distinguishing characteristic is the shape of the letter "B",

especially involving the upper loop. The upper and lower loops are "pinched" where they join in B139. This does not occur in B139A. The illustration in the U.S. Perfins Catalog also shows a bent letter "I" in perfin B139A. This bent letter is not seen in the pair illustrated here. That leads one to conclude that several die varieties exist.

Pattern B139A will be deleted in the next edition of the U.S. Perfins Catalog and the "y" code will be added to the listing for B139, indicating that die varieties exist.

A thank you goes to Bob Szymanski who spotted this perfin pair and brought it to Boxborough. I encourage all members to keep looking for documentation of die varieties.

From *Wikipedia*:

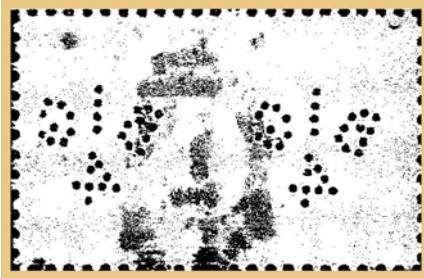
The **Cleveland, Cincinnati, Chicago and St. Louis Railway**, also known as the **Big Four**

(Continued on Page 108)

## The Big Four Lines (Continued)

**Railroad** and commonly abbreviated **CCC&StL**, was a railroad company in the Midwestern United States. It operated in affiliation with the New York Central system.

Its primary routes were in Illinois, Indiana, Michigan, and Ohio. At the end of 1925 it reported 2391 route-miles and 4608 track-miles. That year it



**Big 4 Lines Perfin  
B139—Left  
B139A—Right  
(Enlarged to show detail)**

carried 8180 million net ton-miles of revenue freight and 488 million passenger-miles.

The Vanderbilts had invested in the first Big Four, and they were firmly in control of the

new Big Four, the Cleveland, Cincinnati, Chicago and St. Louis, which was formed in 1889 by the consolidation of the old Big Four (Cincinnati, Indianapolis, St. Louis & Chicago) and the Bee Line (Cleveland, Columbus, Cincinnati & Indianapolis).

In the late 1880s, Ingalls and the Vanderbilts gathered a group of railroads between Cairo and Danville, Illinois. After adding the St. Louis, Alton & Terre Haute to that group, they added the group to the Big Four. The line from Danville north to Indiana Harbor was a comparatively late addition to the system. It was built in 1906 and became part of the NYC rather than the Big Four.

The Peoria & Eastern was formed in 1890 from several small railroads. At one time, its predecessor briefly included the former Mad River & Lake Erie and a line from Indianapolis east to Springfield, Ohio, before settling down to be simply a Peoria-Bloomington-Danville-Indianapolis route. In 1902 the Big Four bought the Cincinnati Northern, a line that had been proposed in 1852 and finally constructed in the 1880s from Franklin, Ohio, between Dayton and Cincinnati, to Jackson, Michigan. In 1920 the Big Four acquired the Evansville, Indianapolis & Terre Haute, a castoff from the Chicago & Eastern Illinois in southwestern Indiana.

The New York Central Railroad formally leased the Big Four in 1930.

## Season's Greetings

Ken Masters (LM#3589)



**Advertising Card  
from the collection of Ken Masters  
franked with S118 (SF/Co) perfin,  
Standard Furniture Company  
Seattle, Washington**



# The Washington Bicentennial Issue of 1932

Steve Endicott (LM#2284)

Twelve attractive stamps comprise the Washington Bicentennial issue of 1932. This makes for an interesting collecting topic for philatelists, including perfins collectors. The series was issued to commemorate the 200<sup>th</sup> anniversary of the birth of President George Washington.

Preliminary plans for this issue called for a far more ambitious set of stamps than is seen in the final result. Plans included a large set of commemorative stamps depicting various events in George Washington's life and would have included an extensive list of denominations similar to the 1922 definitive series, from the ½ cent stamp all the way through the \$5 stamp. The stamps would have been similar in concept and size as the Columbian and Trans-Mississippi series, except this series would have been bi-colored. Proposed drawings of selected higher denomination pictorial stamps are shown at the end of this article. Another idea, proposed by some in the U.S. Congress, was to include a portrait of George Washington on every U.S. stamp issued in 1932, akin to the tradition of including portraits of the monarchy on British stamps – I don't think our first President of The United States would have liked that.

There was a concern that the depiction of events in George Washington's life might not be

historically accurate; for example, the accuracy of the painting of Washington Crossing the Delaware would certainly be challenged. Ultimately the stamps were issued in a conservative, attractive series of the twelve single color George Washington portrait stamps with which we are all familiar. They were first offered for sale on January 1, 1932 at the Washington, D.C. post office and were offered for sale in post offices throughout 1932. Printing stopped in October, 1932 with the intention that all stamps in this series would be sold by the end of December. Some post offices temporarily took them off-sale after December 31, 1932, but a directive from the Postmaster General ordered that sales would continue until stock was exhausted.

This series has been extensively studied by philatelists. Over 50 transfers, relief breaks and plate errors have been documented. I have not found any with perfins, as well.

A checklist of perfins known to exist in this series is being compiled. So far, 1,473 different perfins (with 3,620 denominations) have been found to be used in this series. That is a substantial number of perfins for a series that, in theory, was to be in use for one year.



The 1/2¢ Scott 704 stamp is a portrait of George Washington at age 25 from a painting by Charles Wilson Peale in 1777, the original of which is in the Metropolitan Museum of Art in New York City. This is the most difficult stamp to find with a perfin; only 14 have been reported. Here is perfin A135, a D rated perfin used by A.G. Schwab & Company in Cincinnati, OH.



The 1¢ Scott 705 stamp portrays the bust of George Washington made by Jean A Houdon in 1785. This portrait bust, now at Mt. Vernon, is considered to be one of the most accurate portraits of George Washington. 331 perfin patterns have been found in this stamp issue. Here is perfin P146, a B+ rated perfin used by The Pacific Mutual Life Insurance Company of Los Angeles, CA.



The 1½¢ Scott 706 stamp is from a painting of George Washington in 1796 by Charles Wilson Peale. This is a portrait of George Washington as a Colonel in Virginia. The painting is now kept at the Washington & Lee University. This is another difficult stamp to find with a perfin; 134 patterns have been reported. Here is perfin O046, a B rated pattern used by the Oregon Life Insurance Company in Portland, OR.



*(Continued on Page 110)*

## Washington Bicentennials (Continued)



The 2¢ Scott 707 stamp was the “workhorse” stamp of the series, fulfilling the rate for a first class letter in 1932. 4.2 billion of these stamps were printed – more than all the other stamps in this series – combined. This stamp is from the famous portrait of George Washington by Gilbert Stuart in 1796. This portrait is familiar to us as it has been on our \$1 bill since 1923. The painting is now in the Boston Museum of Fine Arts. Several months after the issuance of this bicentennial series, the rate for a first class letter was increased to 3¢. To meet consumer

demand for the 3¢ stamp, the Post Office slightly redesigned the framing of this 2¢ stamp and issued it in the standard violet color for 3¢ stamps (Scott #720) with which we are familiar. 810 perfin patterns have been reported, by far the most in this commemorative series. Here is perfin W201, an A rated perfin – the user of this perfin is unknown.



The 3¢ Scott 708 stamp is a portrait of George Washington in a general's uniform with a cocked hat, an unfamiliar portrait to many Americans. This comes from a portrait done by Charles W Peale, painted at Valley Forge in 1777. An earlier design for this denomination was a combined portrait of George and Martha Washington. 294 perfins have been reported in this stamp. Perfin J132, a B rated pattern is shown nearby. The user is unknown; a postmark exists showing it being used in Chicago, IL.



The 4¢ Scott 709 stamp is a portrait of George Washington from a painting by Charles Peale Polk. The painting is now at the National Portrait Gallery in Washington, D.C. 434 perfins have been reported in this stamp. Shown here is perfin I095, a B rated perfin used by the International Supply Company in Tulsa, OK.



The 5¢ Scott 710 stamp is the third portrait from a painting by Charles Wilson Peale of George Washington in this series. The painting now resides with the New York Historical Society. 227 perfins are known to exist in this stamp. Shown here is perfin C093.5, a B+ rated pattern used by Clark, Childs & Keech.



The 6¢ Scott 711 stamp in this series is a portrait of George Washington as a general from a painting by John Trumbull in 1792. The painting is now at Yale University in New Haven, CT. 415 perfins are known in this stamp. Here is perfin A113, a B rated perfin; the user is unknown. Some of the orange 6¢ stamps of the early 1900s have chemically oxidized to a brown color. The stamp shown here has nice, original color.



The 7¢ Scott 712 stamp in this series is a portrait of George Washington, also from a painting by John Trumbull, earlier in 1780. The painting is now in the Metropolitan Museum of Art in New York City. This is another stamp in this series that is relatively difficult to find with perfins. 154 perfins have been reported in this issue. Shown here is perfin T016, a B rated perfin which was recently identified as being used by the Transportation Club in New York City.



(Continued on Page 111)

## Perfins Club Roster 2015-2016

Below is presented the Perfins Club roster as it is on October 10, 2015. Members are reminded that this roster is for use by members of the Perfins Club and should not be distributed outside of the club.

The columnar format is generally followed, but there are exceptions when the length of some part of an entry requires a second line. For all US and most foreign addresses the sequence of information is constant. Exceptions to this rule occur for countries like Germany and The

Netherlands where their equivalent to the US zip code appears before the city name.

As always there is a significant amount of information presented in abbreviated form and most of the abbreviations (those used as suffixes or at the ends of addresses) lack the periods generally associated with them. In an attempt to avoid confusion, as much as possible, here are the translations of the abbreviations used.

Used anywhere in the list:

c/o = Care of  
E = East  
N = North  
NE = Northeast  
NW = Northwest  
S = South  
SE = Southeast  
SW = Southwest  
W = West

In the # column:

LM = Life Member #  
COMP = Complimentary Copy

In the First Name column:

DR. = Doctor  
LCDR. = Lieutenant Commander

MRS. = Misses

REV. = Reverend

In the Last Name column:

III = the Third  
Jr = Junior  
MD = Medical Doctor  
Sr = Senior

In the Address column:

APT = Apartment  
AVE = Avenue  
BLVD = Boulevard  
CIR = Circle  
CRES = Crescent  
CT = Court  
DR = Drive  
LN = Lane

MT = Mountain

PKWY = Parkway

PL = Place

PO = Post Office

RD = Road

RM = Room

RR = Rural Route

RTE = Route

ST = Street

ST. = Saint

STE = Suite

STR = Strasse

TERR = Terrace

TR = Trail

And in the City column:

FT. = Fort

ISL = Island

#	F. NAME	L. NAME	ADDRESS	CITY	STATE	ZIP	COUNTRY	EMAIL
3916	ANDREW	ABDUL	PO BOX 1111	HEWITT	NJ	07421-5111		aa@dawnsscientific.com
3902	BEN	ADAMS	PO BOX 41972	SACRAMENTO	CA	95841-0972		fjadams@gmail.com
LM 114	FRANCIS	ADAMS	6006 PORTABELO CT	SAN DIEGO	CA	92142-0308		fran.adams@gmial.com
2873	CHARLES A.	ADRION Jr	PO BOX 10295	ROCHESTER	NY	14610-0295		cadrion@rochester.rr.com
1867	GARY A.	ALBRIGHT	265 JAN DR	HARLEYSVILLE	PA	19438-1918		garyaalbright@aol.com
3967	JEANNETTE	ALEXANDER	5425 COLUMBIA DR S	FRESNO	CA	93727-6019		jarma32@comcast.net
2727	STANLEY J.	ALSIS	PO BOX 102	FEEDING HILLS	MA	01030-0102		
1584	JOHN L.	AMIET	PO BOX 1282	TOOMBUL	QLD	4012	AUSTRALIA	
4076	JAY	ARMSTRONG	6802 ESCONDIDO DR	HOUSTON	TX	77083-1116		jay_armstrong@sbcglobal.net
LM 98	FREDERICK	ARTHUR ATKINSON	8840 E SUNLAND AVE LOT 38	MESA	AZ	85208-2960		artatneb@aol.com
3996	KEN	AURWECK	500 LEMONT DR	NASHVILLE	TN	37216-1006		kauerweck@yahoo.com
LM 137	WILLIAM F.	BAEKERS	PO BOX 3052	5003 DB TILBURG			THE NETHERLANDS	baekers@home.nl

#	F. NAME	L. NAME	ADDRESS	CITY	STATE	ZIP	COUNTRY	EMAIL
LM 3766	BRADLEY A.	BAKER	6294 W 96th ST	ZIONSVILLE	IN	46077-9302		
	4020 STEPHEN	BANKS	932 CLAIRE AVE	SACRAMENTO	CA	95838-1610		stephenbank7049@comcast.net
	3165 E. LEE	BASTIEN	PO BOX 417	SHERIDAN	CA	95681-0417		
LM 4005	GARY E.	BASTIN	10626 56TH AVE W	MUKILTEO	WA	98275-4416		gary_bastin@frontier.com
	3825 DAN	BAUGHER	14618 BIG TIMER LN	CHESTERFIELD	MO	63017-5659		dbaugher@charter.net
	3595 ROBERT	BEASECKER	1027 SAN LUCIA DR SE	EAST GRAND RAPIDS	MI	49506-3456		beaseckr@gvsu.edu
LM 63	ROBERT BRUCE	BECK	413 OMICRON PL	WERNERSVILLE	PA	19565-9231		gentleguy@comcast.net
	3659 DAVID H.	BEGIN	PO BOX 120760	MELBOURNE	FL	32912-0760		
	3546 SYDNEY R.	BENNETT	35 KING ST PO BOX 354	TIMARU CANTERBURY			7940 NEW ZELAND	
	4008 PAUL	BENTO	107 OLD COMMON RD	AUBURN	MA	01501-3207		
	4040 HUGO	BERNAERS	PASTOOR EYKENSLAAN 12	LINT		B-2547	BELGIUM	hugo.bernaers@milcober.com
	3563 JOE L.	BETTINGER III	6151 N CAMINO					
			DE SANTA VALERA	TUCSON	AZ	85718-3722		jbetting@comcast.net
COMP	PHILATELISTICHE	BIBLIOTHEK	ROSENHIMER STR 5	D 81667 MUENCHEN			GERMANY	
	2825 DR. W. WALLACE	BILYEU	PO BOX 410416	SAN FRANCISCO	CA	94141-0416		
LM 142	FREDERICK M.	BIMBLER	PO BOX 771415	MIAMI	FL	33177-0024		fmbingler@aol.com
LM 21	BRIAN	BJORGO	3220 FOREST DR	BREMERTON	WA	98310-4718		
LM 55	EDWIN H.	BLACKBURN	303 CHIQUITA AVE APT 13	MOUNTAIN VIEW	CA	94041-1046		ed.black@ix.netcoin.com
	3564 ROBERT	BLACKMAN	350 NW DESOTO ST	LAKE CITY	FL	32055-3937		
	3802 STEVEN K.	BLAIR	2645 W SIERRA SPRING DR	EDMOND	OK	73012-9072		skblair@cox.net
LM 135	COLIN	BLAKEBROUGH	16 HILLTOP CLOSE	LOUGHTEN ESSEX			ENGLAND 1G10 1PY	oilycookin@tiscali.co.uk
	1049 MARK	BLASER	2029 QUEEN CHARLOTTE PL	RALEIGH	NC	27610-9637		gmblitzkreig@gmail.com
	2629 BUSTER B.	BOATMAN	179 MARCY DR	LOVELAND	CO	80537-3603		
LM 42	NEILEN W.	BOATWRIGHT	1681 MILFORD CREEK					
			OVERLOOK SW	MARIETTA	GA	30008-8108		
	3979 WILL L.	BOBBIN	3890 DUST COMMANDER DR	HAMILTON	OH	45011-5523		wbobbin@cinci.rr.com
	1737 RICHARD W.	BOOSEY Jr	PO BOX 80	MOUNT VERNON	AR	72111-0080		pfarms@windstream.net
	4102 GEORGE W.	BOVIS	19 FREEMAN ST	ARLINGTON	MA	02474-8522		gb101343@hotmail.com
LM 95	PRICE	BRADSHAW	220 W 6th ST	BONHAM	TX	75418-3604		wwbrownleehouse@aol.com
	3822 DAVID	BRANDL	893 N BUSH AVE	CLOVIS	CA	93611-7148		dbrandl@comcast.net
LM 14	JOHN L.	BRANDT	604 - 804 3 AVE SW	CALGARY	AB	T2P 0G9	CANADA	
	2697 ROGER S.	BRODY	110 KNIGHTBRIDGE	WATCHUNG	NJ	07060-6400		rsbco@optonline.net
	4058 CHARLES A.	BROWN	105 FAIRVIEW AVE	ELDON	MO	65026-1420		spook1man2001@yahoo.com
	4085 CONNIE JO	BROWN	5620 N 12th ST	PHOENIX	AZ	85014-2331		sequoiajoy@gmail.com
	4000 RICHARD I.	BROWN	200 EMERALD AVE APT 58	LAKE WALES	FL	33853-4613		
	2831 BRUCE B.	BRUNELL	425 E GOBBI ST STE 98	UKIAH	CA	95482-5553		bbrunell@comcast.net
	3951 KERRY I.	BRYANT	PO BOX 5104 STN B	VICTORIA	BC	V8R 6N3	CANADA	kerrybryant@accesscomm.ca
LM 4028	E. CLARK	BUCHI	816 HIGH POINT RIDGE RD	FRANKLIN	TN	37069-4767		eclark8@yahoo.com
	3511 JOHN R.	BUCKLES	13028 20th AVE CT S	TACOMA	WA	98444-1137		johnbuckles@earthlink.net
LM 17	JOHN M.	BUCKNER	5609 NW 97th ST	GAINESVILLE	FL	32653-2854		

#	F. NAME	L. NAME	ADDRESS	CITY	STATE	ZIP	COUNTRY	EMAIL
4039	MICHAEL	BULLIED	12 MONTEREY DR	HAZLET	NJ	07730-2144		m.bullied@verizon.net
1074	WILLIAM W.	BURKHARDT	2231 49TH AVE	LAUDERHILL	FL	33313-3431		
4086	CHARLES W.	BURTON	PO BOX 27552	RALEIGH	NC	27611-7552		cwburton2@bellsouth.net
4038	WILFRED J.	BUTTERFIELD	912 LAZY S DR	SHOW LOW	AZ	85901-4020		njbutterfield@frontiernet.net
2383	PATRICK E.	CALLIS	5551 FM 2633	SANTA ANNA	TX	76878-6424		pcallis@copper.net
863	LOUIS	CAPRARIO	91 FAIRVIEW AVE	WEST ORANGE	NJ	07052-2511		lcaprario@aol.com
LM 146	RONALD E.	CARLSON	400 OAKWOOD TR	McKINNEY	TX	75069-8723		
LM 9	CHRIS	CARR	36 HOLTON MOUNT					
			HOLTON-LE-CLAY	GRIMSBY			ENGLAND DN36 5EQ	gbperfins@tiscali.co.uk
LM 85	RONALD	CARR	60 ROBINHOOD RD	PITTSBURG	PA	15220-3014		rgc211215@aol.com
3899	JOSEPH D.	CERRETO	6 JACKSON LN	MANSFIELD CENTER	CT	06250-2503		jcerreto@charter.net
3984	ROBERT E.	CHALLEY	2960 CAMINO DIABLO STE 300	WALNUT CREEK	CA	94597-3961		rchalley@ppgip.com
3667	JOHN P.	CHASE	775 W GOLF VIEW DR	TUCSON	AZ	85737-9704		john-panama-chase@msn.com
4089	BALLARD	CHEATHAM	9345 HOLLY OAK WAY	SALINAS	CA	93907-1112		armadilloal@yahoo.com
4011	DENIS A.	CHENETTE	329 ST LAURENT ST	NEWPORT	VT	05855-5493		dchenette@hotmail.com
2566	FRANK M.	CHERNICH	PO BOX 46	IRONTON	MO	63650-0046		fmcavp@centurytel.net
3670	KENNETH LEE	CHOTINER	PO BOX 492204	LAS ANGELES	CA	90049-9504		
LM 3722	DAVID L.	COATH	4 FLEMING CT	RESEARCH 3095	VICTORIA		AUSTRALIA	david@prompt.com.au
LM 3724	LARRY	COHEN	72 YEATON RD	PLYMOUTH	NH	03264-3430		reb.cohen@roadrunner.com
4047	NORMAN A.	COHEN	PO BOX 29543	DALLAS	TX	75229-0543		normanacohen@gmail.com
3781	DR. ROBERTO B.	COLLA	217TP7AR, PO BOX 02-5780	MIAMI	FL	33102-5780		robertobcolla02@hotmail.com
LM 24	ROBERT T.	COMBS	PO BOX 220	TOME	NM	87060-0220		stampmgr@hubwest.com
4082	JEFFREY M.	CONEY	201 JACKSON AVE	HAGERSTOWN	MD	21740-5031		jeffrey.coney@coneyfamily.com
3911	HUBERT C.	CONNOLLY	9614 SHEPARD PL	WELLINGTON	FL	33414-6420		hcc2916@comcast.net
2382	ROLAND R.	COOLBAUGH	6199 N BANDON PL	GARDEN CITY	ID	83714-4057		
LM 89	CHARLES W.	COONS Jr	83 CHRISTIAN HILL RD	GREAT BARRINGTON	MA	01230-1110		
3882	W.A.	COOPER	12 TUMBLEWEED DR	PITTSFORD	NY	14534-2529		wacooper34@rochester.rr.com
3592	CHARLES	CORDREY	913 E GROVE ST	DELMAR	DE	19940-1309		brian.913@verizon.net
LM 77	MERVI.	CORMIER	2 ROSEDALE CRESENT	ST JOHN	NB	E2J 3G4	CANADA	mervcormier@hotmail.com
LM 82	RAY L.	COUGHLIN	6324 CANYON CIR	FORT WORTH	TX	76133-4411		coughlin@raylcoughlin.com
2574	JOSEPH C.	COULBOURNE	1532 LAKEVIEW PKWY	LOCUST GROVE	VA	22508-5318		josephc427@aol.com
1430	JERRY	CRADDOCK	1608 NORVELL ST	EL CERRITO	CA	94530-2244		jerrycrad1935@yahoo.com
3976	WALLACE A.	CRAIG	PO BOX 3391	FULLERTON	CA	92834-3391		wamcraig@att.net
3730	FRANCINE T.R.	CRAVEN	9 MT TERR	KINNELON	NJ	07405-0000		francinecraven@hotmail.com
3577	DAVID W.	CROSSLAND	PO BOX 355	BIRDSBORO	PA	19508-0355		stampman@vzw.blackberry.net
LM 25	WILLIAM W.	CUMMINGS	510 ARROWHEAD DR	SIDNEY	OH	45365-1802		wcummings@woh.rr.com
2508	JACK	CUNNINGHAM	114 TAYLOR LN	ST MARIES	ID	83861-9547		
3955	RONALD	CURRIER	9319 CHISWELL RD	DALLAS	TX	75238-3318		ron.currier@att.net
LM 126	DOUGLAS J.	CUTLER	5943 GULLSTRAND ST	SAN DIEGO	CA	92122-3819		sobearcat@hotmail.com
3875	JEAN-GUY	DALPE	101 MARCEI R. BERGERON,					
			#204	BROMONT	QC	J2L 0H4	CANADA	dalpemi@videotron.ca

#	F. NAME	L. NAME	ADDRESS	CITY	STATE	ZIP	COUNTRY	EMAIL
3843	KENNETH E.	DAUGHERTY	1912 HUNSKOR RD	OAK HARBOR	WA	98277-8666		kedsinc@whidbey.net
4103	ALFRED	DeBURRO	PO BOX 316	SALEM	NH	03079-0316		aljelaje@aol.com
2157	ROBERT J.	DEDECKER	4 "LES GERIOLES"	60520 PONTARME			FRANCE	dedeckerr@yahoo.fr
LM 113	BOB	DELANEY	551 FRANCES ST	VENTURA	CA	93003-4650		
3859	PHILIP J.	DeMARIS	1202 S PROSPECT AVE	CHAMPAIGN	IL	61280-6337		
2581	BRIAN	DENNIS	28 PYRACANTHA ST	HELDERVUE			SOMERSET WEST	bdennis@mweb.co.za
2874	WILLIAM R.	DERRICK	4240 DUNCAN DR	MISSOULA	MT	59802-3288		bill.derrick@yahoo.com
3620	JOHN S.	DESANTO	3 SPARROW WAY APT D	QUEENSBURY	NY	12804-8728		desanto7843@roadrunner.com
3817	STEVE A.	DIRKSEN	1800 ELKTON RD	CLEARWATER	MN	55320-1510		sadirksen@frontiernet.net
4062	GLENN L.	DITTO	3580 DWYER LN	FLORISSANT	MO	63033-2915		amfstl@att.net
1356	WILLIAM L.	DONLE Jr	PO BOX 511	OSTERVILLE	MA	02655-0511		bdonle@yahoo.com
3880	JASON A.	DORN	2257 DORN FARM PL	SALE CREEK	TN	37373-5729		dorn_farm@epbf.com
3977	JOSEPH A.	DOUGHERTY	10975 STONEHAM RD	PARMA HEIGHTS	OH	44130-3004		jdjjoedoc@gmail.com
2188	NEIL F.	DOWSLEY	1673 LONGACRE DR	VICTORIA	BC	V8N 2M9	CANADA	nfdowsley@shaw.ca
LM 71	MILLARD J.	DRISCOLL	301 DRIVER AVE	SUMMERVILLE	SC	29483-2461		mdriscoll@sc.rr.com
3747	GUSTAV G.	DUEBEN III	12451 94th AVE N	SEMINOLE	FL	33772-2058		res08w341@verizon.net
LM 133	RICHARD L.	DUFRESNE	208 N FIR AVE	VIRGINIA BEACH	VA	23452-1218		perfinpuz@hotmail.com
4026	ALISTAIR	DUNCAN	4805 MEADFIELD ROAD	WEST VANCOUVER	BC	V7W 3E6	CANADA	alistair.duncan@shaw.ca
2538	PATRICK	DURBANO	PO BOX 77066, HIWAY 7 RPO	MARKHAM	ON	L3P 0C8	CANADA	perfin@rogers.com
3783	JACK R.	DYKHOUSE	PO BOX 211027	BEDFORD	TX	76095-8027		jackdykhouse@aol.com
2019	HAROLD V.	EASON	PO BOX 1118	BROOMFIELD	CO	80038-1118		
3652	DUANE L.	EDWARDS Sr	PO BOX 494956	REDDING	CA	96049-4956		nodakyak@aol.com
3999	ANN B.	EGGERS	1254 KIRKWOOD LN	SARASOTA	FL	34232-3329		
LM 3287	ROBERT J.	EISSLER	AV MAL DEG DORO, 165	89251-701 JARAGUA do			SUL-SC BRAZIL	
LM 100	HANNU	ELO	LEHVANKATU 18d	33820 TAMPERE			FINLAND	hannu.elo@kolumbus.fi
3830	RONALD	EMERY	16 COUNTRY CLUB RD	CONTOOCOOK	NH	03229-2410		ronaldemery@tds.net
LM 2284	STEPHEN R.	ENDICOTT	20 GREENSBURGH LN	SAN ANSELMO	CA	94960-1000		perfins@gmail.com
3649	JAMES A.	ESTES	8619 S CREEK RD	WILLOW SPRING	NC	27592-8739		jestes1060@gmail.com
3982	CHARLES D.	EVANS	215 KENOAK DR	LOUISVILLE	KY	40214-2756		ceansd@aol.com
3389	DENNIS R.	EWELL	4168 PIPER DR	SAN JOSE	CA	95117-3116		dennis.ewell@netzero.net
3708	DENNIS E.	EWERT	805 DUENO CT	MANITOWOC	WI	54220-6653		ewertsdepre@sbcglobal.net
2228	ALEXANDER M.	FAIRLIE	9880 CHOKE CHERRY LN	PAPILLION	NE	68046-4545		alexanderfairlie@yahoo.com
LM 70	CARL J.	FAULKNER	615 TACONIC TR	WILLIAMSTOWN	MA	01267-2745		cfaulkner@williamsinn.com
3637	DR. URIEL P.	FEDERBUSH	PO BOX 39683	61396 TEL AVIV			ISRAEL	
3668	KEN E.	FEE	436 E WENDELL WAY	SALT LAKE CITY	UT	84115-4629		
4072	J. RICHARD	FEHLER	319 W 198TH ST	NEW YORK	NY	10025-2743		rfehler@gmail.com
3364	DANIEL R.	FELLOWS	529 EISENHOWER AVE	JANESVILLE	WI	53545-1701		hwy51collector@yahoo.com
4045	JAMES W.	FELTON	414 N WASHINGTON ST	TIFFIN	OH	44883-1363		n_g_cpo@yahoo.com
3947	CATHERINE C.	FIELDS	533 WIMBERLY RD	APEX	NC	27523-6777		ccfields@mac.com
2124	RONALD W.	FINGER	1344 GREEBY ST	PHILADELPHIA	PA	19111-5533		roncva43@aol.com

#	F. NAME	L. NAME	ADDRESS	CITY	STATE	ZIP	COUNTRY	EMAIL
LM 120	JOHN C.	FOSTER	4113 PAINT ROCK DR	AUSTIN	TX	78731-1320		retsoftware@hotmail.com
LM 3277	POSTAL HISTORY	FOUNDATION	920 N FIRST AVE	TUCSON	AZ	85719-4818		slusser.library@gmail.com
	3826 NEAL G.	FRAZIER	425 NEUCHATEL RD	NEW BERN	NC	28562-7066		umwws@suddenlink.net
	3008 BRIAN J.	FREEMAN	PO BOX 2222	ELK GROVE	CA	95859-2222		freemandb@saccounty.net
LM 3789	FREDERICK L.	FREEMAN	7700 EXECUTIVE DR NE	ALBUQUERQUE	NM	87109-5114		
LM 52	RANDALL	GABRIELAN	14 FOX HILL RD	MIDDLETOWN	NJ	07748-2956		monmouthhistory@comcast.net
	3824 ROBERT K.	GARRITY	275 PARK AVE	ARLINGTON	MA	02476-7436		
LM 11	DOUGLAS	GARY	PO BOX 457	CAMPBELL	CA	95009-0457		doug_gary@hotmail.com
COMP	ROY	GAULT	27 MARIGOLD DR, BURBAGE	NR. HINCKLEY, LEICS			ENGLAND LE10 2SJ	
LM 72	ANDRE	GEORGE	114 RUE CARTER	SAINT-EUSTACHE	QC	J7P 1Y5	CANADA	ageorges@videotron.ca
	2687 THOMAS J.	GERACE	3193 ELDER WAY	HEMET	CA	92545-1290		
	4068 MELVIN	GETLAN	17137 NORTHWAY CIR	BOCA RATON	FL	33496-5908		mlgacg@cs.com
	2968 JOSEPH	GIAMPIETRO	6478 STATE RD, G-10	PARMA	OH	44134-4166		mo13jo@aol.com
	3852 LINDA G.	GILMORE	27 BRENTWOOD RD	CHELMSFORD	MA	01824-1325		linda.gilmore47@gmail.com
	2299 RUTH M.	GLIDDEN-PANTRY	37 YOUNG DR	SALINAS	CA	93901-1437		pantry@montereybay.com
	1539 TOM E.	GOODWIN	8708 D WOODMAN WAY	SACRAMENTO	CA	95826-2020		tgoodwin0703@att.net
	3502 LARRY	GOTTLIEB	9 KINGSBURY CT	MADISON	WI	53711-2515		lgottlieb2@gmail.com
COMP	JIM	GRAHAM						
	EDITOR, BNA PERFORATOR		12006 HIGHWAY 1, RR 3	LAWRENCETOWN	NS	B0S 1M0	CANADA	jdgraham2@gmail.com
	2605 JOHN A.	GRANT	PO BOX 651	NIXA	MO	65714-0651		
	3711 LENORE K.	GRAY	1164 HASLETT RD	WILLIAMSTON	MI	48895-9310		lenorekgray@gmail.com
	2462 DARUS W.	GREATHOUSE	1505 DOGWOOD DR	CHERRY HILL	NJ	08003-3199		darusgrt@aol.com
	4096 LARRY	GREENFIELD	2604 LAGUNA DR, 2nd FL	ENDWELL	NY	13760-7213		lgreenfi@binghamton.edu
	3877 CRAIG L.	GROTHAUS	39 CRESTVIEW RD	MOUNTAIN HOME	AR	72653-8075		grot@centurytel.net
LM 3788	G.R.	HAAS	9719 BERKLEY CIR	OKLAHOMA CITY	OK	73162-5650		
LM 2359	CHARLES A.	HANSON	31 ARABIAN TR	SPRINGFIELD	IL	62702-1566		
COMP	MAURICE	HARP	GARSTONS FARM HENFOLD					
	EDITOR, GB PERFIN SOCIETY BULLETIN		HENFOLD DRIVE	BEARE GREEN SURREY			ENGLAND RH5 4QS	mauriceharp@aol.com
	3411 JOHN C.	HART	6500 UPPER APPLGATE RD	JACKSONVILLE	OR	97530-9314		jg.hart@charter.net
	4023 PAUL L.	HARTMAN	103 W CLARENCE ST	DODGEVILLE	WI	53533-1801		
	4029 ANTONIO	GILBERTO	ORTEGA HARTZ Jr	AV BASTIAN N.'227 APTo 801	PORTO ALEGRE, RS	90130-021	BRAZIL	
LM 138	CHRIS	HASLETT	4 HEREFORD RD FOXLOW	PK BUSTON DERBYSHIRE			ENGLAND SK17 9PG	
	2902 CHARLES E.	HAWLEY	PO BOX 219	SPRINGDALE	WA	99173-0219		ckhawley@gmail.com
	3771 STEVEN A.	HAWLEY	506 McKINLEY DR	BOWLING GREEN	OH	43402-1533		
	3869 BRADFORD L.	HAYES	5723 HIGH PARK DR	MINNETONKA	MN	55345-5224		suretybonds@comcast.net
	3221 WILLIAM P.	HAYMAN	4919 WESTOVER TERR	KNOXVILLE	TN	37914-5064		whayman@att.net
LM 3710	GERALD	HEJDUK	PO BOX 490450	LEESBURG	FL	34749-0450		flprepers@comcast.net
	4094 JEANNE G.	HEJDUK	21039 ROYAL ST GEORGE LN	LEESBURG	FL	34748-7760		hejdukjg@comcast.net
	4024 ANDREW M.	HELD	15080 NE NORTH VALLEY RD	NEWBERG	OR	97132-6524		cyborg@agora.rdrop.com
	2490 GARY G.	HENDREN	12737 GLENAGE	MARYLAND HEIGHTS	MO	63043-2811		g2hslm@msn.com

#	F. NAME	L. NAME	ADDRESS	CITY	STATE	ZIP	COUNTRY	EMAIL
2064	ROBERT W.	HENRY	16 WHITE TAIL LN	BASKING RIDGE	NJ	07620-3725		bobh1830@yahoo.com
33	MIKE	HERT	PO BOX 864	BANKSTOWN	NSW	2200	AUSTRALIA	mikhert@hotmail.com
3985	HELMUT L.	HEUER	1550 WASHINGTON ST	BATH	ME	04530-2921		budheuer@yahoo.com
4060	HANS	HILTE	HOOFTLAAN 10	1401 ED BUSSUM			THE NETHERLANDS	hans@hilte.com
3054	JAMES J.	HIRSTEIN	5999 CUNNINGHAM CT	FLORENCE	MT	59833-6064		jhirstein@hotmail.com
4064	ROBERT E.	HODGES Jr	7188 SKIDMORE COVE	MEMPHIS	TN	38119-8907		sbpk@comcast.net
LM 122	IRVIN W.	HOLLOWAY	7201 LEONARD ST	PHILADELPHIA	PA	19149-1315		
LM 3601	WILLIAM	HOSKINSON	1175 OAKHURST DR	BROOMFIELD	CO	80020-1245		
3662	CHRISTINA	HOWLAND-STITT	8508 WESTPORT RD	LOUISVILLE	KY	40242-3048		citastamp@aol.com
4052	DAVID E.	HUGHES	117 ELKINGTON RD, BURRY PORT	CARMARTHENSHIRE			WALES UK SA16 0AB	dedhughes@elk117.plus.com
LM 3447	MICHAEL D.	HYNES	PO BOX 866	FOLSOM	CA	95763-0866		mike@precancels.com
COMP	SMITHSONIAN	INSTITUTION	PO BOX 37012 POSTAL MUSEUM MRC 570	WASHINGTON	DC	20013-7012		
3995	CLIFF P.	IRVING	PO BOX 131	EAST SANDWICH	MA	02537-0131		2hike@comcast.net
3725	HERMANN	IVESTER	5 LESLIE CIR	LITTLE ROCK	AR	72205-2529		ivesters@swbell.net
4054	FRANK R.	JACKSON	3796 S 600 W	NEW PALESTINE	IN	46163-9736		stampnfrank@yahoo.com
3144	BARBARA H.	JARVIS	8324 LAKE FOREST DR	SACRAMENTO	CA	95826-2923		bjarvis06@comcast.net
3610	ENOCH	JEN	3934 W SIDE DR	HUDSONVILLE	MI	49426-1927		enoch_jen@gmail.com
1676	JAMES M.	JOHNSON	214 FRANCISCAN TR	REDDING	CA	96003-8270		manleyjnj@aol.com
LM 28	JON	JOHNSON	39 HILLGOVE CRES SW	CALGARY	AB	T2V 3K8	CANADA	jcjperfins@hotmail.com
2879	JO C.	JONES	2225 DEARBORN DR	NASHVILLE	TN	37214-1933		jo.jones57@gmail.com
1033	PHILIP S.	JONES	62 S BROOKS ST	COLUMBUS	IN	47201-7226		
4071	JAN	KANT	FRASS HALSSTRAAT 1	1816 CM ALKMAAR			THE NETHERLANDS	
3211	JAMES L.	KATONA	PO BOX 91628	LAKELAND	FL	33804-1628		jlkatona@aol.com
3302	LEWIS	KAUFMAN	PO BOX 255	KIAMESHA LAKE	NY	12751-0255		kerik1@aol.com
4053	SEAN	KEANE	541 CHARLESWORTH DR	SARNIA	ON	N7V 2R5	CANADA	k.kean7@gmail.com
3223	CRYSTAL	KELLY	132 JENKS CIR	PANAMA CITY	FL	32405-4319		ckelly850@aol.com
LM 108	JONATHON	KENNEDY	7059 BROOKFIELD PLAZA	SPRINGFIELD	VA	22150-2915		j.w.kennedy@verizon.net
3901	ANNAMARY L.	KENNELL	PO BOX 51449	SARASOTA	FL	34232-0332		annamaryke@aol.com
1901	DAVID A.	KENT	PO BOX 127	NEW BRITAIN	CT	06050-0127		kentdave@aol.com
1448	JAMES V.	KENYON	4500 OLD MYSTIC CT	SALIDA	CA	95368-8013		
4084	RICHARD S.	KILGORE	726 BARTLETT DR	WILLOW SPRINGS	MO	65793-7918		rocks1@centurylink.net
LM 2168	GLADYS S.	KISNER	825 SUMMIT AVE APT 1404	MINNEAPOLIS	MN	55403-4142		
4061	GERALD W.	KLINGBEIL	10343 SAGEGATE DR	HOUSTON	TX	77089-4423		jsk6128@hahoo.com
3864	RICHARD	KLOTZ	908 E ELOIKA RD	DEER PARK	WA	99006-7107		rjklotz@wildblue.net
1607	KENT J.	KOBERSTEEN	PO BOX 155	OCCOQUAN	VA	22125-0155		kobersteen@gmail.com
3948	JAN	KRISTIANSEN	BRINKEN 109, MOGENSTRUP	DK-4700 NAESTVED			DENMARK	hanna.jan@mail.tele.dk
4030	JONATHAN W.	KUMBERA	W 182 N 8596 WESTCHESTER DR	MENOMONEE FALLS	WI	53051-2538		jkumbera@att.net
4025	LEON J.	LaCHANCE	41 RIVER'S END DR	SEAFORD	DE	19973-8006		lachancel@comcast.net



#	F. NAME	L. NAME	ADDRESS	CITY	STATE	ZIP	COUNTRY	EMAIL
3047	RICHARD A.	LAETSCH	3 SHADY CREEK LN	SCARBOROUGH	ME	04074-9723		precancel@aol.com
4065	CLAUDE	LAFRANCE	1846 BEAUHARNOIS	LONGVEVIL	QC	J4M 1X8	CANADA	
4069	DAVE	LAGERSTROM	5062 S 174TH ST	OMAHA	NE	68135-4306		
3903	AL	LAYTON	629 GREEN VALLEY WAY	SYKESVILLE	MD	21784-8518		al_layton@yahoo.com
3975	ROBIN F.	LEADEN	17242 11TH AVE NE	SHORELINE	WA	98155-5112		robinleaden@netscape.net
3352	DR. ARNOLD	LEMMEL	AM BRUNNEN 12	D 27432 BREMERVORDE			GERMANY	alemmel@gmx.de
3718	WILLIAM F.	LESH	200 C ST	ROSEVILLE	CA	95678-3120		
4056	JOSE	LEVY	34 CIRCLE CREEK WAY	ORMOND BEACH	FL	32174-1824		jlevy5@cfl.rr.com
COMP	A.P.S. RESEARCH	LIBRARY	100 MATCH FACTORY PLACE	BELLEFONTE	PA	16823-1367		
	3835 N.W. PHILATELIC	LIBRARY	PO BOX 6375	PORTLAND	OR	97228-6375		nwpl@questoffice.net
COMP	GIFT EXCHANGE							
		LIBRARY OF CONGRESS	10 FIRST ST SE	WASHINGTON	DC	20560-0001		
	932 AL J.	LIGHT	4083 ORLEANS LN	SARASOTA	FL	34232-5038		fire_light@verizon.net
	3480 PAUL D.	LIGHTLE	10616 CIELO VISTA					
			DEL NORTE NW	CORRALES	NM	87048-8902		perfinpaul@msn.com
LM 57	W. EDWARD	LINN	1211 ARROYO GRANDE DR	SACRAMENTO	CA	95864-2831		linn3@mac.com
COMP	LINNS STAMP NEWS							
		RECENT JOURNALS EDITOR	PO BOX 29	SYDNEY	OH	45365-0029		
	3992 ROBERT	LITTRELL	8150 CHIPITA PARK RD	CASCADE	CO	80809-1105		robert.littrell@comcast.net
	4098 ROB D.	LOEFFLER	111 MANDEVILLE AVE	PEQUANNOCH	NJ	07440-1817		rdloeffler@optionline.net
	3382 IAN	LONGLEY	2, LESLIE PLACE, NORTH ROAD	FORRES, MORAY		IV36 1BB	SCOTLAND	
LM 116	JOHN F.	LYDING	3124 GRACEFILED RD APT 316	SILVERSPRING	MD	20904-5818		md1726@yahoo.com
	3828 ROBERT E.	LYNCH	3325 OLD MILL RD	NORTHBROOK	IL	60062-6323		rlynch3@sbcglobal.net
	3104 JAMES M.	MAC EVITT III	14469 SUNRISE DR NE	BAINBRIDGE ISLAND	WA	98110-4192		mikemacevitt@gmail.com
LM 117	CHARLES H.	MACHADO	8864 JURUPA RD	RIVERSIDE	CA	92509-3162		
	4050 SALLY J.	MAIER	23584 CENTERVILLE RD	LaMONTE	IA	52054-9500		iamaier@netins.net
	4087 ALANNA C.	MAKI	6177 VOXVIEW AVE NW	CANTON	OH	44718-3789		xstitchalanna@yahoo.com
	3371 BRUCE	MALLOTT						
		AMHURST PHIL	c/o 48 S LN	ANGOLA	NY	14006-9068		amhrstph@roadrunner.com
LM 3723	LARRY T.	MARGETISH	APT 407, 955 DINGLEY DELL	VICTORIA	BC	V9A 5R6	CANADA	
	3871 ALEXANDER W.	MARKS Jr	701 S MAIN ST TRLR 62	COUPEVILLE	WA	98239-3515		ampmstamps.comcast.net
LM 144	KENNETH P.	MARTIN	105 IRISH HOLLOW RD	BELLEFONTE	PA	16823-6204		kpmartin@stamps.org
	3981 ROBERT W.	MARTIN	PO BOX 1809	KIHEI	HI	96753-1809		mauistampcollectordude@gmail.com
LM 3589	KEN	MASTERS	7909 N MAIN ST	KANSAS CITY	MO	64118-1449		krmasters@aol.com
LM 49	RICHARD D.	MATTHEW	102-6086 BOUNDARY DR WEST	SURREY	BC	V3X 2B3	CANADA	rdmatthew@shaw.ca
	3962 CURT A.	McCOY	10253 COLLARD DR	LAKEVIEW	MI	48850-9143		cmccoy1@myfrontiermail.com
LM 1787	VINCENT C.	McDERMOTT	22 BEECH DR	BRUNSWICK	ME	04011-3446		vjmcdermott@aol.com
	3614 PAUL V.	McDONELL	76 WILTSHIRE DR	CHATHAM	ON	N7L 2N5	CANADA	pvmcdonell@sympatico.ca
	3532 GEORGE W.	McGOWAN	PO BOX 482	EAST SCHODACK	NY	12063-0482		geolotus2003@nycap.rr.com
	4009 JAMES W.	McKENNA	PO BOX 65	ALDEN	MN	56009-0065		alcor333@hotmail.com

#	F. NAME	L. NAME	ADDRESS	CITY	STATE	ZIP	COUNTRY	EMAIL
4079	LEN	McMASTER	27 FAIRFIELD LN	CAPON BRIDGE	WV	26711-9090		pegnlen@aol.com
3969	LESTER H.	MELTZER	513 SUMMIT AVE	ST. PAUL	MN	55102-2603		homez38@comcast.net
LM 12	CHARLES C.	METZGER	PO BOX 19417	SACRAMENTO	CA	95849-0417		rivboat@pacbell.net
LM 84	UWE	METZGER	GENERALKONSUL-VON- WEIB-STR.8A	D-53639 KONIGSWINTER			GERMANY	
4083	NANCY	MEYER	23 CHECKERBERRY CIR	SUDBURY	MA	01776-1227		nancy_meyer@alumniXduke.edu
2986	RENE A.	MICHAUD	3317 TICE CREEK DR, #1	WALNUT CREEK	CA	94595-3728		
3997	THOMAS	MICKLER	102 SMITHFIELD CT	DUBLIN	GA	31021-0444		tmickler@bellsouth.net
3974	HARLAN L.	MILLER	3502 FIREFLY CT	LAWRENCE	KS	66049-5104		harlanmiller@sbcglobal.net
4095	DANIEL	MILONE	21 OAK CREST DR	BROOKFIELD	CT	06804-2324		danmilo@msn.com
4074	JEFFREY R.	MINCH	8 SHAKESPEAR RD	NASHUA	NH	03062-2431		jeffrey.minch@gmail.com
LM 111	PAUL A.	MISTRETТА	4148 COMMODORE DR	ATLANTA	GA	30341-1533		paulmistretta70@gmail.com
3180	JOHN E.	MITCHELL	28 GREEN FOREST DR	ORMOND BEACH	FL	32174-5966		
3906	GEORGE A.	MIURA	1007 LONG LN APT 207	HONOLULU	HI	96817-3322		goermiur@aol.com
4070	MIKE	MOLLE	De FLIER 3703	6605 ZP WYCHEN			THE NETHERLANDS	
LM 3443	ARTHUR J.	MONGAN	12432 PRETORIA DR	SILVER SPRING	MD	20904-1845		revs.perfins@gmail.com
3687	JERRY D.	MOORE	443 CALLE DE LA MESA	NOVANTO	CA	94949-5912		perfinhole@yahoo.com
3459	THOMAS	MORKEBERG	LYNGPARKEN 12	6670 HOLSTED S			DENMARK	moerkeberg@email.dk
1657	WILLIAM W.	MORRISON	16728 W 157th ST	OLATHE	KS	66062-6302		wwmorrison@aol.com
3925	DOUGLAS C.	MOSS	7643 FALLMEADOW LN	DALLAS	TX	75248-5323		douglasmos@sbcglobal.net
3490	VLADIMIR	MUNZBERGER	PO BOX 260	160 41 PRAHA 6			CZECH REPUBLIC	
1255	DAVID F.	MURRAY	220 E 87th ST, APT 4E	NEW YORK	NY	10128-3103		hsienm@verizon.net
LM 2	ROBERT J.	MURRIN	PO BOX 10100	ST PETERSBURG	FL	33733-0100		murrin.robert@yahoo.com
2970	STEPHEN D.	NADLER	9730 E 32nd AVE	DENVER	CO	80238-2934		schlomox@msn.com
LM 1060	ERIK B.	NAGEL	PO BOX 65	TAYLORS	SC	29687-0002		erik71@bellsouth.net
3098	DONALD D.	NELSON	30745 RIVER CROSSING	BINGHAM FARMS	MI	48025-4654		
3436	DONALD H.	NELSON	537 S LAKE ST	NEENAH	WI	54956-2326		
3621	LOREN W.	NEUHARTH	5808 BOSQUE VISTA DR NE	ALBUQUERQUE	NM	87111-8313		lorenneu@aol.com
3665	ROBERT D.	NOBLE	119 EVERGREEN CT	MANHEIM	PA	17545-8282		rdnoble@ptd.net
3889	PHIL	NODDER	SUMMER HSE, FARRS LANE COMBE DOWN	BATH			BA2 5DU ENGLAND	
LM 130	HUBERT L.	NORRIS Jr	1549 PANORAMA DR	VESTAVIA HILLS	AL	35216-3336		
3946	MARWAN E.	NUSAIR	PO BOX 498788	CINCINNATI	OH	45249-8788		hejaz@tccincinnati.com
3638	JEAN A.	OBERHOLTZER	301 S. HILDEBRAND AVE APT 8-J	GLENDORA	NJ	08029-1809		
4077	LARRY	OLIVER	PO BOX 340	BLACK MOUNTAIN	NC	28711-0340		stamper707@gmail.com
3971	JAMES C.	OPP	9130 KNOLLWOOD DR N	STILLWATER	MN	55082-7401		jimmopp43@yahoo.com
LM 86	KURT	OTTENHEIMER	462 W WALNUT	LONG BEACH	NY	11561-3133		oak462@optonline.net
3760	WILLIAM R.	PACKARD	42841 W MISTY MORNING LN	MARICOPA	AZ	85138-8558		n7hot@arrl.net
3636	MICHAEL	PADWEE	453 14th ST	BROOKLYN	NY	11215-5701		mpadwee@gmail.com

#	F. NAME	L. NAME	ADDRESS	CITY	STATE	ZIP	COUNTRY	EMAIL
2194	ANTHONY F.	PAGLIUCA	17 ALVESTON ST	JAMAICA PLAIN	MA	02130-2832		
3377	ROBERT L.	PANCOTTI	56 GRIFFIN RD	WESTFORD	MA	01886-3917		
4100	MICHAEL F.	PAPPAS	420 ADAMS ST	PLYMOUTH	MI	48170-1212		tjpappas@comcast.net
3551	ROY A.	PARKER	1302 QUARTERPATH CT	RICHMOND	TX	77406-6502		rp77469@comcast.net
COMP	EVERETT L.	PARKER						
	THE STAMP COLLECTOR		249 NW LIVE OAK PL	LAKE CITY	FL	32055-8906		
3050	JOHN (LARRY)	PATTERSON	PO BOX 3442	CARY	NC	27519-3442		larryofjtrack@bellsouth.net
LM 65	ALB ERT N.	PEARSON	PO BOX 351	B OISSEVAIN	MB	R0K 0E0	CANADA	fishrus@mts.net
3172	REV. JOHN G.	PEARSON	369 SEASTONE ST	RALEIGH	PA	27603-3190		jgppearson529@gmail.com
700	NORMAN H.	PENCE	214 DOROTHY ORTON DR	HUGO	OK	74743-1068		norman@hotmail.com
3812	AL	PENTIS	PO BOX 2154	RAMONA	CA	92065-0936		pentis@hotmail.com
2152	WESLEY J.	PERKINSON	9423 117th ST E	PUYALLUP	WA	98373-3615		wesperkinson@comcast.net
3690	JOHN W.	PERSOHN	106 W BLUE ROCK DR	HORSESHOE BAY	TX	78657-5929		possomjohn@yahoo.com
4097	DOUGLAS E.	PETERSON	10 BROADWAY	WEST MILFORD	NJ	07480-4318		
LM 203	THOMAS	PHIPPIN	995 WAR EAGLE DR N	COLORADO SPRINGS	CO	80919-1638		
3958	DONALD	PICKERING	319 E DUNSTABLE RD STE124C	NASHUA	NH	03062-2299		doepic@comcast.net
1338	TED	PINAS	2792 10th ST	CUYAHOGA FALLS	OH	44221-2048		
4014	STEVEN A.	PLA	4618 IDLEWILDE LN SE	ALBUQUERQUE	NM	87108-3422		spla@swcp.com
LM 22	DEREK A.	POCOCK	PO BOX 9056	SUBIACO NICHOLSON RD		6008 W	AUSTRALIA	derekalan@iinet.net.au
4022	ROBERT N.	POPE	9408 APPALACHIAN DR	SACRAMENTO	CA	95827-1107		thepope66@hotmail.com
3164	LAURIE	PRESCOTT	550 24th ST APT 308	OAKLAND	CA	94612-1701		laurieespinoza@hotmail.com
3611	RANDALL	PRIEST Jr	4500 S SANFORD AVE	SANDFORD	FL	32773-7031		ransan1w@yahoo.com
3548	KENNETH	PRUESS	1441 URBANA LN	LINCOLN	NE	68505-1971		kpruess2@unl.edu
3858	ELVEN C.	PUNCH	1316 BEVERLY GARDEN DR	METAIRIE	LA	70002-1906		
LM 18	AUGUST	RAMHORST	15217 VILLAGE 15	CAMARILLO	CA	93012-7037		
1336	JOHN M.	RANDALL	2540 CARQUINEZ AVE	EL CERRITO	CA	94530-1548		jv.randall@comcast.net
3853	LARRY L.	RAUSCH	1403 RIVERS RUN	ROCHESTER	NY	14623-4944		stonywoods840@gmail.com
2655	KATHLEEN M.	REED	PO BOX 1463	CONROE	TX	77305-1463		dutchmom@consolidated.net
3394	KEN	REHFELD	17208 E 3rd AVE	SPOKANE VALLEY	WA	99016-9155		kenrehfeld@comcast.net
3891	THOMAS G.	REHKOP	PO BOX 1013	FENTON	MO	63026-1013		tgrehkop@marz.com
3306	JOSEPH C.	REYMER	5429A MILLENTZ AVE	ST LOUIS	MO	63109-3517		
2644	DAVID	REYNOLDS	7805 LIME AVE	FONTANA	CA	92336-8718		
3794	DAVID	RHODES	5460 OCEANVIEW TERRACE	NANAIMO	BC	V9V 1G7	CANADA	drphilatel@me.com
LM 3887	PATRICIA A.	RICHMOND	2714 NACOGDOCHES RD	SAN ANTONIO	TX	78217-5865		poebe@peoplepc.com
3420	W. DAVID	RIPLEY III	PO BOX 854	BELTSVILLE	MD	20704-0854		dripley@csc.com
3801	KEITH H.	ROBERTSON	8760 LAUREL GROVE LN	NORTH CHARLESTON	SC	29420-6817		robertsk@sc.rr.com
4088	PAUL	ROBERTSON	PO BOX 711	SANTA CLARA	CA	95052-0711		paul@newanglicanchurch.com
LM 62	JOHN W.	ROHRER	19718 PIERSON RD	PIERSON	MI	49339-9634		
4080	JOHN E.	ROLLO	2 CLARIDGE DR APT 1NE	VERONA	NJ	07044-4000		jkrollo@msn.com
3716	JOHN C.	ROOT	404 PLEASANT ST	PAXTON	MA	01612-1375		jroot60@charter.net
3988	RICHARD JAY	ROSS	370 OAKBROOK DR	BIRDSBORO	PA	19508-8544		rjayross@ptd.net

#	F. NAME	L. NAME	ADDRESS	CITY	STATE	ZIP	COUNTRY	EMAIL
LM 66	TERRY	ROWE	1509 S DUGAN RD	URBANA	OH	43078-9209		trowerms@ctcn.net
	1124 RUDOLPH J.	ROY	4420 HUDGINS DR	VIRGINIA BEACH	VA	23455-6416		rroyperfin@aol.com
	3463 IRA L.	RUBIN	10 EAST END AVE, #21C	NEW YORK	NY	10075-1106		irtp@earthlink.net
	2379 RONALD B.	RUBY	618 FISHING CREEK RD	CUMBERLAND	PA	17070-2736		rblyther@frontiercom.com
	1834 CHRISTIAN C.	RUEGER	ROTBUCHENSTRASSE 4	D 90449 NUERNBERG			GERMANY	
	3296 ROBERT W.	RUSS	48 THOMPSON AVE	FT MITCHELL	KY	41017-2709		
	4063 HARMKLAAS	RUTGERS	TIMORSTRAAT 44	9715 LG GRONINGEN			THE NETHERLANDS	dandbreakfastdezwartekat.nl
	4048 RUSSELL D.	SAMPSON	48 B EASTBROOK HTS	MANSFIELD CENTER	CT	06250-1654		rsampson314@gmail.com
LM 2539	ALAN F.	SANDY	PO BOX 2159	PETALUMA	CA	94953-2159		volsand@pacbell.net
LM 43	DAVID	SAVADGE	576 COVINGTON	LIVERMORE	CA	94550-1512		
LM 140	BRIAN C.	SAXE	5329 FORREST CT	WARRENTON	VA	20187-4503		bcsaxe@yahoo.com
	3908 ROBERT H	SCHAPPELLE	4638 BERWICK DR	SAN DIEGO	CA	92117-4230		rschappelle@san.rr.com
	3311 DICK D.	SCHEPER	HOGELAND 1	NL 2264 JX LEIDSCHENDAM			THE NETHERLANDS	dick.scheper@planet.nl
	3792 THOMAS	SCHLICHT	10681 OAK ST APT 90	LOS ALAMITOS	CA	90720-6290		
	3602 ROBERT STUART	SCHNEIDERMAN	47-27 LITTLE NECK PKWY APT 6E	LITTLE NECK	NY	11362-1408		robertschneiderman@yahoo.com
	4090 RONALD D.	SCHRAM	1305 SCOTT CIR	AMOS	IA	50014-4041		ciccorp1@qwestoffice.net
	3613 RICK	SCHRIER	PO BOX 56	REDWOOD CITY	CA	94064-0056		alfiefs@comcast.net
	4092 WILLIAM J.	SCHULTZ	34413 TANGUERAY DR	GRAYSLAKE	IL	60030-1794		jeeny@sprynet.com
	3990 JOHN E.	SCHUPP Jr	65 VERDE VALLEY SCHOOL RD APT H1	SEDONA	AZ	86351-9005		john@jkstamps.com
LM 505	ROBERT J.	SCHWERDT	9 MEMORY LN	POUGHKEEPSIE	NY	12603-5231		
	3898 HAROLD	SCOTT	10 LORETTA LN	PLYMOUTH MEETING	PA	19462-2300		
	3058 ARNOLD H.	SELENGUT	1109 N RIVERHILLS DR	TEMPLE TERRACE	FL	33617-4243		arnsel@verizon.net
	3759 IAN C.	SELICK	3426 GUIDER AVE, APT 3	BROOKLYN	NY	11235-5249		bristolalumnus@yahoo.com
	3924 BARRY C.	SENIOR	4 WHITEWAY PLACE	CLARENVILLE	NL	A5A 2B5	CANADA	barry.senior@nf.sympatico.ca
	3873 DONALD K.	SERAFIN	8924 SHADY POINT	COMMERCE TOWNSHIP	MI	48382-3784		dkserafin@msn.com
	4093 JOHN	SHAFROTH	59 WILD GOOSE WAY	CENTERVILLE	MA	02632-3333		jocksdnver@aol.com
	3549 GEORGE B.	SHAW	1000 HERITAGE GREENS DR	WAKE FOREST	NC	27587-4379		g0607shaw@gmail.com
	3065 COL. WILLIAM P.	SHEA	50 GOODMAN DR	MIDDLETOWN	CT	06457-1954		william.shea@sbcglobal.net
	3703 STEVEN L.	SHERMAN	652 KNOLLWOOD DR	BATTLE CREEK	MI	49015-4610		stevensherman652@att.net
	3487 DANIEL	SHERWOOD	6975 CHESTNUT RIDGE RD	LOCKPORT	NY	14094-3429		
	3758 JEFFERY	SIGLER	4762 STATE RTE 3	CENTRAL SQUARE	NY	13036-2242		
	3809 TERRY W.	SITCH	666 ST. JAMES ST APT 416	WINNIPEG	MB	R3G 3J6	CANADA	terry_sitch@cpr.ca
	4101 ROGER P.	SMIT	3920 COLBY AVE SW	WYOMING	MI	49509-3951		rogersmitmi@aol.com
	3541 DALE E.	SMITH	1212 NE 96th TERR	KANSIS CITY	MO	64155-2149		thedale.smith48@gmail.com
	1514 DAVID W.	SMITH	PO BOX 64	TRUMANSBURG	NY	14886-0064		precancelSmith@aol.com
	3811 VIRGINIA M.	SMITH	PO BOX 43	CANYONVILLE	OR	97417-0043		
LM 128	JAMES E.	SNEED	403 CRESSFELL RD	IRMO	SC	29063-2605		jamesedwinsneed@aol.com
	COMP ROYAL	PHILATELIC SOCIETY	41 DEVONSHIRE PLACE	LONDON			ENGLAND 21G 63Y	

#	F. NAME	L. NAME	ADDRESS	CITY	STATE	ZIP	COUNTRY	EMAIL
2208	WISCONSIN HISTORICAL SOCIETY/AQUISITIONS		816 STATE ST	MADISON	WI	53706-1482		acquisitions@wisconsinhistory.org
LM 68	GERALD E	SOUTAR	DAMMWEG 4/1	D 69123 HEIDELBERG			GERMANY	
3579	DUANE E.	SPIDLE	1022 LUTHRAN WAY	COLORADO SPRINGS	CO	80915-2571		duaneandsue@elpasotel.net
3719	WILLIAM C.	STALDER	2407 BUENA VISTA CIR	CARLSBAD	CA	92008-1606		
3983	JAMES W.	STANDIFORD	1600 FAIRTON RD	MILLVILLE	NJ	08332-4608		
3888	MICHAEL D.	STERRETT	402 MEADOW LN	OSSIAN	IN	46777-9385		msterrett@ifp1.com
4041	GENE	STEWART	4729 IDAHO AVE	ST LOUIS	MO	63111-1445		genestamps@charter.net
3245	KENNETH T.	STEWART	5482 BUNKER HILL RD	MILFORD	OH	45150-9610		
3254	ROBERT A.	STOLDAL	7758 WILLOW COVE CIR	LAS VEGAS	NV	89129-5512		stoldal@cox.net
4051	CRAIG J.	STOWERS	16 WEBSTER HILL ESTATES	MT VERNON	IL	62864-2346		stowers@charter.net
3157	SHARON L.	STRAIT	234 NW SEQUOYAH DR	LAWTON	OK	73507-9144		sharonstrait@wichitaonline.net
3568	MICHAEL G.	STROTHER	4677 SPRINCREEK DR	LEXINGTON	KY	40515-1506		eagles3strother@gmail.com
2665	FRANCIS A.	STUNZI	37 SMITH ST	ROUSES POINT	NY	12979-1602		fastunzi@primelink1.net
1694	WAYNE E.	STUTSMAN	71046 INDIANA LAKE DR	UNION	MI	49130-9714		indianalake@comcast.net
3849	GENE	STUTZENSTEIN	2449 GIBLEY PARK RD	TOLEDO	OH	43617-2254		genestutz@yahoo.com
3744	FRANK	SWEET	308 RUGBY RD	SYRACUSE	NY	13203-1443		
2654	STELLAN	SWENSON	ODONBaRSVaGEN 32	SE-293 41 OLOFSTROM			SWEDEN	
LM 145	ROBERT H.	SZYMANSKI	10 CLARRIDGE CIR	MILFORD	MA	01757-1371		perfinman@comcast.net
FAMILY	SUE-ELLEN	SZYMANSKI	10 CLARRIDGE CIR	MILFORD	MA	01757-1371		
2949	STEPHEN J.	TAUBER	38 INGLESIDE RD	LEXINGTON	MA	02420-2522		ejt-sjt@rcn.com
LM 104	ARTHUR R.	TAYLOR	19 SUNDOWNER AVE	BERRARA 2540	NSW		AUSTRALIA	
3737	RONALD R.	TELLIER	7362 JANITA DR	MOBILE	AL	36695-4412		rtellier@bellsouth.net
4081	KUNIO	TERAD	1503 MUKAEDI I-CHOME	MOHIYAM-KU NAGOYA			463-0036 JAPAN	
LM 119	DAWN A.	THOMAS	2513 WILLIAMSBURG DR	UNIONTOWN	OH	44685-8743		
LM 7	DR. HARVEY G.	TILLES	105-C SHORELAKE DR	GREENSBORO	NC	27455-1462		htilles@triad.rr.com
LM 93	BAREND	TIMMERMAN	1606 BRITNEY DR	SHERWOOD	AR	72120-4812		bltim43@hotmail.com
LM 59	GARY	TOMASSON	19 HAVERHILL ROAD SW	CALGARY	AB	T2V 3E4	CANADA	
1786	CONRAD M.	TREMBLAY	1563 RUE PAPIN	L'ASSOMPTION	QC	J5W 5H9	CANADA	
LM 3673	SUSAN L.	TUCKER	PO BOX 1148	DEFIANCE	OH	43512-1148		suebobstamps@msn.com
LM 2549	DOUGLAS E.	TURNER	PO BOX 3069	VENTURA	CA	93006-3069		dturner@west.net
LM 139	SHUICHI	UCHMIYAMA	26-11 SHOGEN	HMAMATSU			430 JAPAN	
3926	CSABA	URMENYI	2701 S 48TH ST	MILWAUKEE	WI	53219-3218		
3066	VIN	VAICEKAUSKAS	137 WHITE ROCK DR	WINDSOR	CT	06095-4348		
2893	DERICK	VAN SCHOONHOVEN	1329 KIRKLAND VILLAGE	BETHLEHEM	PA	18017-4759		dbvans@kirklandvillage.org
LM 110	LCDR. A.F.	VanNOSTRAND Sr	PO BOX 1913	BRISTOL	TN	37621-1913		van@btcs.tv
469	CHESTER H.	VANWHY	333 W MAIN ST	SEARSPORT	ME	04974-3505		cvanwhy@roadrunnr.com
LM 141	MARC	VERMEULEN	STATIELEI 26 B 40	B-2640 MORTSEL			BELGIUM	
3346	RICHARD E.	VETTER	2201 N CENTER ST	RLWY & INDUST. SER	IL	60403-2521		

#	F. NAME	L. NAME	ADDRESS	CITY	STATE	ZIP	COUNTRY	EMAIL
4099	MARY T.	VOGENBERGER	3368 SUNSET KEY CIR UNIT 202D	PUNTA GORDA	FL	33955-1970		memmlv@comcast.net
3739	DOUGLAS	WALKER	PO BOX 1477	DUVALL	WA	98019-1477		
LM 105	MYRA B.	WALKER	333 W MEYER BLVD APT 213	KANSAS CITY	MO	64113-1743		treetribe@kc.rr.com
LM 37	ROY	WARE Jr	328 WICKLEY WAY	WOODSTOCK	GA	30188-7044		
4002	RANDAL MARTIN	WARNOCK	2898 PALMER RD	QUALICUM BEACH	BC	V9K 1W5	CANADA	randalmw@yahoo.ca
4057	RODNEY W.	WATTS	4901 HIGH ST	ROCKLIN	CA	95677-2433		13rod13@att.net
3879	WAYNE H.	WEATHERL	16500 SE 1ST ST UNIT 76	VANCOUVER	WA	98684-2900		wayneh4949@gmail.com
LM 118	HERBERT N.	WEAVER	438C WANNACUT LAKE RD	OROVILLE	WA	98844-9787		
3838	JAMES R	WEILAND	73 CANTERBURY RD	AURORA	IL	60506-4236		
LM 74	WILLIAM M.	WEILER	PO BOX 767	BRADFORD	NH	03221-0767		wmcw@tds.net
3819	ALFRED N.	WEINER	4105 MARIETTA	VESTAL	NY	13850-4032		almar@stny.rr.com
LM 67	JERRY	WEIRICH	13103 PENNYPACKER LN	FAIRFAX	VA	22033-3446		Jgpmj@aol.com
LM 15	GARY B.	WEISS	501 MEDICAL CENTER BLVD	WEBSTER	TX	77598-4219		garybweiss@aol.com
LM 34	ELLEN	WEISZ	701 LAKE HINSDALE DR APT 403	WILLOWBROOK	IL	60527-2241		feil34@aol.com
3832	JOHN H.	WELSCH	1910 RIVERVIEW ST	AUSTIN	TX	78702-5527		jhwelsch@hotmail.com
3878	ALBERT E.	WHITE	4912 COUNTY ROAD 217	FULTON	MO	65251-3633		awhite01@socket.net
3242	KENNETH L.	WHITE	PO BOX 11376	PRESCOTT	AZ	86304-1376		kenwhite@cableone.net
3920	OWEN L.	WHITE	PO BOX 860, STN K	TORONTO	ON	M4P 2H2	CANADA	owen.white@sympatico.ca
LM 3391	SUSAN A.	WHITEHEAD	PO BOX 8249	GREENVILLE	SC	29604-8249		
2586	RONALD S.	WHYTE	406-7500 GRANVILLE AVE	RICHMOND	BC	V6Y 3Y6	CANADA	lokopoko@shaw.ca
LM 125	JOOP A.	WIBIER	MAISBERG 42	4708 NR ROOSENDALL			THE NETHERLANDS	verzend2@home.nl
COMP	MIKE	WIGGINS	APS COORD. 207 SUZANNE LN	WEBB CITY	MO	64870-2074		
4078	EDMUND L.	WILKINS	2036 NASHVILLE RD	BOWLING GREEN	KY	42101-3847		edmundwilkins@att.net
3084	EUGENE G.	WILL	14410 261st AVE N	ZIMMRMAN	MN	55398-2100		willeugene5503@netscape.com
3757	KIRBY E.	WILLEMS	PO BOX 294	NEW WINDSOR	IL	61465-0294		will85@nwctv.net
LM 129	JAMES R.	WILLIAMS	PO BOX 75	STILLWATER	OK	74076-0075		
4037	JOHN	WILLIAMS	1252 N CRESTWAY	WICHITA	KS	67208-2809		
3322	JAMES L.	WINDER	740 S RIDGEMARK DR	HOLLISTER	CA	95023-6431		jimshirw@gmail.com
3994	B LOU	WINKELSAS	PO BOX 702	KENMORE	NY	14217-0702		
COMP	ALFRED	WIRTH	UNTERM AFFERBERG 12 a	D 54516 PROSDORF			GERMANY	
4006	OTTO F.	WOLKE	9 RED OAK DR	DANVILLE	PA	17821-8417		ocloud@aol.com
3845	GEORGE F.	WOOD	PO BOX 124	NEWFIELD	ME	04056-0124		
1696	HIDEO R.	YOKOTA	10 ANITA CT	BELMONT	CA	94002-2012		hryokota@hotmail.com
3437	DONALD J.	YOUNG	60 LINDEN RD	MELROSE	MA	02176-2308		doubleturtel@aol.com
4091	MITCHELL(MICK)	ZAIS	1642 TANGLEWOOD RD	COLUMBIA	SC	29204-3308		mzais@newberry.edu
2868	LOUIS H.	ZANDBERGEN	DRAPENIERLAAN 27	8043 AJ ZQOLLE			THE NETHERLANDS	
3866	WILLIAM	ZELLERS	1970 SAN SILVESTRO DR	VENICE	FL	34285-4572		

## Washington Bicentennials (Continued)



The 8¢ Scott 713 stamp is a profile of a bust portrait of George Washington, reproduced from a crayon drawing made by Charles Balthazar Julien Févret de Saint-Ménin at Philadelphia in 1798. 199 perfins have been reported in this stamp. Here is perfin W105, a B rated pattern used by Worthington Pump & Machinery Company in Cincinnati, OH.



The 9¢ Scott 714 stamp is a portrait of George Washington by W. Williams in 1794. The portrait is now in the Masonic Lodge in Alexandria, VA. The primary color of this stamp issue is “pale red”. However, *Scott’s Specialized* also lists “orange red” as a variation, the only recognized color variation in the Scott Catalog for this commemorative series. Perfins can be found in stamps of both color variations. A total of 300 perfins have been reported so far in this 9¢ issue. Shown first is the “rale red” variety, perfin S195-04. (B+ rated) a Standard Oil perfin used in Charlotte, NC. Secondly, a Standard Oil perfin, S195-42, (B rated), is shown as the “orange red” variety. (*Editor’s Note: The photo editing and publishing programs that I am using do not accurately portray the color variations of these stamps.*)



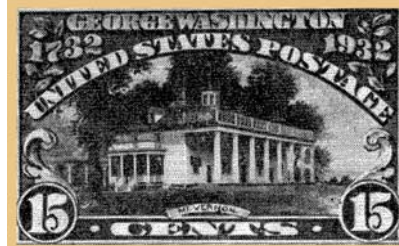
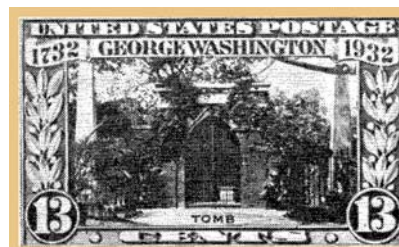
The 10¢ Scott 715 stamp is a portrait of George Washington by Gilbert Stuart, this one in 1795. This portrait also resides in the Metropolitan Museum of Art in New York City. 308 perfins are known to exist in this stamp. Here is perfin V012, a B rated pattern; the user is unknown.



I would enjoy hearing from you if you have an interest in collecting this series, commemorating the 200<sup>th</sup> birth of George Washington, the first President of The United States. I can send you a working copy of the checklist. At some point, when the checklist seems to be reasonably stable, this checklist will be published on our Perfins Club website. The checklist will never be “complete”. That is one of the wonderful features of our perfins hobby – there is always opportunity for philatelic research.

Pictured at right are some of the drawings for the higher denominations of the proposed pictorial designs that were not used. (Page copied from *The United States Commemorative Stamps of the Twentieth Century, Volume 1*, by Max G. Johl, 1947.)

- 13cent – George Washington’s Tomb
- 14cent – George Washington’s Birthplace - Wakefield, VA
- 15cent – Mount Vernon
- 16cent – Washington Resigning his Commission
- 17cent – Inauguration – March 4, 1793
- 20cent – Crossing the Delaware
- 25cent – Everyday life at Mount Vernon



# WEW

Bob Szymanski (LM#145)

When I first starting collecting perfin, I collected French perfins. It was only natural because I was a French stamp collector! It was not long before I decided to attend a Perfin Convention where I met many members of our club. My very first was in Wilmington, Delaware in 1995. I had the pleasure of meeting Bob Schwerdt, Dick Mewhinney, Kurt Ottenheimer, Doug Turner, John Lyding and quite a few others. This was the beginning of many long time friendships and many connections into the perfin collecting world than I had previously barely touched. The absolutely best piece of advice that I received was from Bob Schwerdt who mentioned to me that I should buy every perfin that came my way and collect whatever interested me and the rest could always be used to trade to some other collector who would greatly appreciated my offer of trade or sale. Needless to say after accumulating a couple of hundred thousand perfins, I found them all interesting. A worldwide perfin collector was created!

Most articles that appear in the Perfins Bulletin are discussing United States perfins in most every way imaginable. This is good and is to be expected. Occasionally, an article appears on other than United States perfins and this is also good and is very educational. Naturally, most collectors collect material that they find most readily available. Our club has members worldwide and the editor can always use an article or two from you, our members, on perfins from around the globe!

The very first French perfin that I found, which was not in the French catalog, was the "WEW" (Figure 1). I didn't even know whether it was a "WEW" or an "MEM"! I forwarded this to Robert Dedecker, a long time perfin club member and the editor of the French Perfin Catalogue "Ancoper". He told me that, indeed, this was a new French pattern and a "WEW". This was the beginning of a long friendship, albeit, long distance, but we have corresponded and traded and bought and sold perfins for close to 20 years.

Imagine my surprise when I recently received a packet of perfins from a trader in Spain with a "WEW" but this time the pattern was in a British KEVII 1d (Figure 2). Instinctively, I knew that these two patterns were the same and took out my French copy and voila - a perfect match! Next, I took out my letter "W" in the British catalog to look for "WEW". It was listed as W2357.01. At least three

copies existed because it is listed as reported in the Queen Victoria "Jubilee" issues in ½d (verm), 2½d, 5d. with only one use date of 18 Nov 1895 and



Figure 2  
WEW in  
British stamp

without a known user. The date of 12 Aug 1904 on my copy is now an LKU (latest known usage) and a new issue. Likewise there was a hint on this stamp that might help clarify something else "BUTE...CARDIFF" which was also listed in the British perfin catalog as the probable location due to a partial cancel and "D57" which both help pin the location to BUTE (DOCKS) CARDIFF.

With this additional information, I sent an e-mail to Roy Gault, the Great Britain Perfin Catalogue editor, as well as Robert Dedecker, the French Perfin Catalogue editor, with copies of both perfins and a request wondering if they could add anything to the probability that this perfin is exactly the same and appears in both countries lists of perfins! Both editors responded quickly and with some interesting information.

British catalog editor, Roy Gault, wrote the following which I quote verbatim.

"With the postmark being Welsh, I would be prepared to put a small sum of money on the user being called 'Williams', a prolific Welsh surname.

I have an 1884 South Wales Trade Directory, which I agree is a little early, but there was nothing in the W's to match the initials "WEW" under Cardiff. {There was no mention of Ferdinand Callier or William Edgar Williams under Swansea either, although Williams & Davies were Coal Merchants at 5 Gloucester Place, Swansea}.

However, I also have a CD with an 1893-4 Cardiff Directory, which should be more useful. Unfortunately, the Commercial Section is divided into trades (usually it's all commercial companies arranged alphabetically, irrespective of trade, and so easier to search for a surname beginning 'W'), but I did find a **William Edgar Williams**, Coal Exporter & Ship Broker, Docks, and Exchange Buildings, Mountstuart Square, Cardiff. A company such as this is going to be large enough to warrant perforating postage stamps as a deterrent against pilfering.

A search of the Internet yielded:

*From information from the London Gazette dated May 14th 1878 it appears that Ferdinand Callier had entered into business with a William Edgar Williams, the company being called Callier & Williams, Shipbrokers,*

(Continued on Page 113)



---

## WEW (continued)

*Coal Merchants and Commission Agents. Somewhere along the line this partnership split up and William Williams was declared bankrupt. An application for his discharge as a bankrupt was made on **May 11th 1878**.*

*In the County Court of Glamorganshire, Holden at Swansea. In the Matter of a Special Resolution for Liquidation by arrangement of the affairs of **William Edgar Williams** residing at 14 Herbert Place, Swansea in the County of Glamorgan, formerly in co-partnership with **Ferdinand Callier**, trading under the style or firm of **Callier and Williams** as Ship Brokers, Coal Merchants, and Commission Agents now trading on his own account as a Ship Broker, Coal Merchant, and Commission Agent, at No. 1. Somerset Place (Swansea).*

*A GENERAL Meeting of the Creditors of the said **William Edgar Williams** is hereby summoned to be held at 10 Temple Street, Swansea on Friday, the 24th day of May instant, at three o'clock in the afternoon precisely. In accordance with the provision with the said act and the general rules made in pursuance thereof. The object of the meeting and the business proposed to be transacted thereat will be: To consider the granting of the discharge of the said **William E Williams** - Dated the **11th day of May 1878**.*

*R G Cawker, Trustee.*

In all probability, the two William Edgar Williams are one and the same, especially as they have the same stated line of business! His co-partner Ferdinand Callier sounds foreign, but I suspect not French.

It would appear that after his partnership with F Callier was dissolved, and W E Williams was declared bankrupt, he sought his fame and fortune in Cardiff, where he set up in business doing what he knew best.

I did look for the death of a William E Williams in Cardiff after 1905 through to 1925, and there were four - 3 in 1914, and another in 1919. Of the four, two might be possibly from their birth years: **1851-1914**, and 1867-1919, although the latter couldn't be the chap involved in the 1878 bankruptcy.

The 1901 census for Cardiff lists a William E Williams (aged 50), Magistrate & **Colliery Proprietor**, living with his family at 9 Clive Crescent, Penarth Cardiff. He was

born at Briton Ferry, Glamorgan. This is likely to be the man who died in 1914.

Although I've proved nothing, I'm happy to suggest that the user of "WEW" (W2357.01) in Cardiff 1895-1905 was William Edgar Williams, Coal Exporter & Ship Broker, at the Docks, and Exchange Buildings, Mountstuart Square, Cardiff."

In contacting Perfin Club member and French Perfin Catalog editor, Robert Dedecker, I received scans of three copies of the "WEW" in British stamps (fig. 3), which add more issues to the ones known to Roy Gault. Unfortunately, since the French copy of the "WEW"



**Figure 3**  
**WEW in**  
**British stamps**

is the only one known to date, trying to ascertain a French connection is extremely difficult. Nonetheless, I am encouraged as three collectors in three different countries were able to connect and put together additional information for the Great Britain perfin catalog.

*(NB - You can appreciate what all catalog editors go through in finding as much information as possible trying to identify perfin users and why it is important to always forward information to them that may be different or sheds any light on the process of pattern use or identification.*

*Thanks to both Roy and Robert for their help in making this article possible.)*

---

## Join us in January at Milford

Bob Szymanski (LM#145)

The New England Perfins and Precancel Clubs will be holding a joint meeting and swap on Saturday January 23, 2016, between 9:30 a.m. and 3:00 p.m. at the Milford Town Library. The library is located in downtown Milford, MA, off Rte. 16 on Spruce Street. It is easily reachable from I-495 Exit 19 Rte. 109 or Exit 20 Rte. 85.

The meeting room is on the lower level and can be reached through the main entrance by either stairs or elevator. There is also a loading door from the outside employee parking lot directly to the room.

For detailed directions if you do not have MapQuest or a GPS, please give me a call or send me an email. My contact information is:

(508) 478-7303

or

[perfinman@comcast.net](mailto:perfinman@comcast.net)

Also, I would appreciate it if you would let me know if you intend on coming to this meeting and what you are looking for to add to your collection. There will be plenty of perfins and, as always, the more the merrier!

# Thank You from The Perfins Club!

Ken Rehfeld (#3394)

Thanking these members who made donations along with their dues:

**Sustaining Members:**

- 4058 CHARLES A. BROWN
- 4038 WILFRED J. BUTTERFIELD
- 3902 BEN ADAMS
- 3371 BRUCE MALLOT
- 3165 E. LEE BASTIEN
- 3595 ROBERT BEASECKER
- 3563 JOE L. BETTINGER III
- 2566 FRANK M. CHERNICH
- 3911 HUBERT CONNOLLY
- 3817 STEVE A. DIRKSEN
- LM 70 CARL FAULKNER
- 2687 THOMAS J. GERACE
- 1539 TOM E. GOODWIN
- LM 3788 G.R. HAAS
- 4023 PAUL L. HARTMAN
- 2902 CHARLES E. HAWLEY
- 3054 JAMES J. HIRSTEIN
- 3901 ANNAMARY KENNEL

- 1448 JAMES V. KENYON
- 3997 THOMAS MICKLER
- 3638 JEAN OBERHOLTZER
- 3050 LARRY PATTERSON
- 2152 WESLEY J. PERKINSON
- 3958 DONALD PICKERING
- 3801 KEITH H. ROBERTSON
- 3602 ROBERT SCHNEIDERMAN
- 3703 STEVEN L. SHERMAN
- 3809 TERRY W. SITCH
- 1514 DAVID W. SMITH
- 3541 DALE E. SMITH
- LM 68 GERALD E. SOUTAR
- 4041 GENE STEWART
- 3157 SHARON L. STRAIT
- 3737 RONALD R. TELLIER
- 1786 CONRAD TREMBLAY
- LM 2549 DOUGLAS TURNER
- 3739 DOUGLAS WALKER
- 3879 WAYNE H. WEATHERL
- 3437 DONALD J. YOUNG
- 4057 RODNEY W. WATTS

**Contributing Members:**

- 4057 RODNEY W. WATTS
- 2831 BRUCE B. BRUNELL
- 3511 JOHN R. BUCKLES
- 3667 JOHN P. CHASE
- 4011 DENIS A. CHENETTE
- 3670 KENNETH CHOTINER
- 2874 WILLIAM DERRICK
- 3977 JOSEPH DOUGHERTY
- 3747 GUSTAV DUEBEN III
- 4045 JAMES W. FELTON
- 2124 RONALD W. FINGER
- 2299 RUTH M. GLIDDEN-PANTRY
- 3711 LENORE K. GRAY
- 2490 GARY G. HENDREN
- 3985 HELMUT L. HEUER
- 3662 CHRISTINA HOWLAND-STITT
- 4053 SEAN KEANE
- 1901 DAVID A. KENT
- 4061 GERALD KLINGBEIL

- 3975 ROBIN F. LEADEN
- 3352 DR. ARNOLD LEMMEL
- 3718 WILLIAM F. LESH
- 3969 LESTER H. MELTZER
- 2986 RENE A. MICHAUD
- 3925 DOUGLAS C. MOSS
- 3098 DONALD D. NELSON
- 3436 DONALD H. NELSON
- 3621 LOREN NEUHARTH
- 3636 MICHAEL PADWEE
- 2194 ANTHONY PAGLIUCA
- 1338 TED PINAS
- 4022 ROBERT N. POPE
- 3858 ELVEN C. PUNCH
- 2655 KATHLEEN M. REED
- 2379 RONALD B. RUBY
- 3924 BARRY C. SENIOR
- 3758 JEFFERY SIGLER
- 3849 GENE STUTZENSTEIN
- 3346 RICHARD E. VETTER
- 3242 KENNETH L. WHITE
- 3845 GEORGE F. WOOD

**UNITED STATES POSTAL SERVICE® (All Periodicals Publications Except Requester Publications)**

1. Publication Title: **The Perfins Bulletin**

2. Publication Number: **01200490**

3. Filing Date: **9/8/2015**

4. Issue Frequency: **Bi-Monthly**

5. Number of Issues Published Annually: **6**

6. Annual Subscription Price: **\$15.00**

7. Complete Mailing Address of Known Office of Publication (Not printer) (Street, city, county, state, and ZIP+4®):  
**7909 N. Main Street  
 Kansas City, Clay, MO 64118-1449**

Contact Person: **Ken Masters**  
 Telephone (include area code): **816-835-5907**

8. Complete Mailing Address of Headquarters or General Business Office of Publisher (Not printer):  
**7909 N. Main Street  
 Kansas City, MO 64118-1449**

9. Full Names and Complete Mailing Addresses of Publisher, Editor, and Managing Editor (Do not leave blank):  
 Publisher (Name and complete mailing address):  
**Ken Masters  
 7909 N. Main Street, Kansas City, MO 64118-1449**  
 Editor (Name and complete mailing address):  
**Clark Buchi  
 816 High Point Ridge Road, Franklin, TN 37069-4767**  
 Managing Editor (Name and complete mailing address):  
**Clark Buchi  
 816 High Point Ridge Road, Franklin, TN 37069-4767**

10. Owner (Do not leave blank. If the publication is owned by a corporation, give the name and address of the corporation immediately followed by the names and addresses of all stockholders owning or holding 1 percent or more of the total amount of stock. If not owned by a corporation, give the names and addresses of the individual owners. If owned by a partnership or other unincorporated firm, give its name and address as well as those of each individual owner. If the publication is published by a nonprofit organization, give its name and address.)  
 Full Name: **The Perfins Club**  
 P. O. Box 125  
**Ken Rehfeld, Secretary** Spokane Valley, WA 99016-0125

11. Known Bondholders, Mortgagees, and Other Security Holders Owning or Holding 1 Percent or More of Total Amount of Bonds, Mortgages, or Other Securities. If none, check box:  None

12. Tax Status (For completion by nonprofit organizations authorized to mail at nonprofit rates) (Check one)  
 The purpose, function, and nonprofit status of this organization and the exempt status for federal income tax purposes:  
 Has Not Changed During Preceding 12 Months  
 Has Changed During Preceding 12 Months (Publisher must submit explanation of change with this statement)

PS Form 3526, July 2014 (Page 1 of 4 (see Instructions page 4)) PSN: 7530-01-000-9031 PRIVACY NOTICE: See our privacy policy on www.usps.com

13. Publication Title	14. Issue Date for Circulation Data Below	
<b>The Perfins Bulletin</b>	<b>September 1, 2015</b>	
<b>15. Extent and Nature of Circulation</b>		
	<b>Average No. Copies Each Issue During Preceding 12 Months</b>	<b>No. Copies of Single Issue Published Nearest to Filing Date</b>
<b>a. Total Number of Copies (Net press run)</b>		
	483	490
<b>b. Paid Circulation (By Mail and Outside the Mail)</b>		
(1) Mailed Outside-County Paid Subscriptions Stated on PS Form 3541 (include paid distribution above nominal rate, advertiser's proof copies, and exchange copies)	288	288
(2) Mailed In-County Paid Subscriptions Stated on PS Form 3541 (include paid distribution above nominal rate, advertiser's proof copies, and exchange copies)	1	1
(3) Paid Distribution Outside the Mails Including Sales Through Dealers and Carriers, Street Vendors, Counter Sales, and Other Paid Distribution Outside USPS®	0	0
(4) Paid Distribution by Other Classes of Mail Through the USPS (e.g., First-Class Mail®)	173	170
<b>c. Total Paid Distribution (Sum of 15b (1), (2), (3), and (4))</b>		
	462	459
<b>d. Free or Nominal Rate Distribution (By Mail and Outside the Mail)</b>		
(1) Free or Nominal Rate Outside-County Copies included on PS Form 3541	6	6
(2) Free or Nominal Rate In-County Copies included on PS Form 3541	0	0
(3) Free or Nominal Rate Copies Mailed at Other Classes Through the USPS (e.g., First-Class Mail)	3	3
(4) Free or Nominal Rate Distribution Outside the Mail (Carriers or other means)	0	0
<b>e. Total Free or Nominal Rate Distribution (Sum of 15d (1), (2), (3), and (4))</b>		
	9	9
<b>f. Total Distribution (Sum of 15c and 15e)</b>		
	471	468
<b>g. Copies not Distributed (See Instructions to Publishers #4 (page #3))</b>		
	12	22
<b>h. Total (Sum of 15f and g)</b>		
	483	490
<b>i. Percent Paid (15c divided by 15f times 100)</b>		
	98.1	98.1

\* If you are claiming electronic copies, go to line 16 on page 3. If you are not claiming electronic copies, skip to line 17 on page 3.

## Reader Response

Bob Schwerdt (LM#505)

In response to "SOAR" (Page 92, Sep/Oct issue):

BE/ST  
B91/S274.5

WI/SH/ES  
W106/S134/E110

B/OB  
B3/O9

# Prices Realized—Auction #145

(August, 2015)

Joe Giampietro (#2968)

Lot	Amount	Lot	Amount	Lot	Amount	Lot	Amount	Lot	Amount
1	\$ 2.00	33	\$ 2.50	65	NB	97	NB	129	NB
2	NB	34	\$ 18.00	66	NB	98	NB	130	NB
3	\$ 2.00	35	NB	67	NB	99	NB	131	\$ 6.00
4	NB	36	NB	68	NB	100	NB	132	\$ 2.00
5	\$ 2.00	37	NB	69	NB	101	\$ 2.00	133	NB
6	\$ 2.00	38	NB	70	NB	102	NB	134	NB
7	\$ 2.00	39	NB	71	NB	103	NB	135	NB
8	NB	40	NB	72	\$ 6.00	104	NB	136	NB
9	\$ 2.00	41	NB	73	\$ 6.00	105	NB	137	\$ 6.00
10	\$ 2.50	42	NB	74	\$ 6.00	106	NB	138	NB
11	NB	43	NB	75	NB	107	NB	139	NB
12	NB	44	\$ 6.00	76	NB	108	NB	140	Nb
13	\$ 2.00	45	NB	77	NB	109	NB	141	\$ 2.00
14	\$ 6.00	46	NB	78	NB	110	NB	142	\$ 6.00
15	\$ 6.00	47	NB	79	NB	111	\$ 2.50	143	NB
16	NB	48	NB	80	NB	112	\$ 2.50	144	NB
17	NB	49	NB	81	NB	113	NB	145	NB
18	WD	50	NB	82	NB	114	NB	146	NB
19	\$2.50	51	NB	83	\$ 6.00	115	NB	147	NB
20	NB	52	\$ 2.00	84	NB	116	NB	148	NB
21	\$ 6.00	53	NB	85	\$ 6.00	117	NB	149	\$ 2.00
22	\$ 6.00	54	NB	86	\$ 2.00	118	NB	150	NB
23	NB	55	\$ 2.00	87	NB	119	NB	151	\$ 30.00
24	\$ 2.50	56	NB	88	NB	120	NB	152	\$ 2.00
25	\$ 2.75	57	NB	89	\$ 6.00	121	\$ 2.00	153	\$ 2.50
26	NB	58	NB	90	NB	122	NB	154	NB
27	NB	59	\$ 2.00	91	NB	123	NB	155	\$ 2.00
28	NB	60	NB	92	NB	124	NB	156	NB
29	\$ 2.50	61	\$ 2.00	93	NB	125	NB	157	NB
30	\$ 2.00	62	NB	94	NB	126	NB	158	NB
31	\$ 2.50	63	NB	95	NB	127	NB	159	NB
32	\$ 2.75	64	NB	96	NB	128	NB	160	NB

# My Personal Perfin

Larry Rausch (#3853)

My personal perfin quest started in 2001 and was finally completed this spring of 2015. I searched the web to find any company who produced a readymade perfin machine, I came up blank. So I figured I would purchase an original perfin machine and replace the dies with my own die layout. After being the under bidder on a number of Ebay machines, I finally was successful in buying a single headed machine. (Figure 1) I chose a letter pin layout that has not been used by USA, UK or Canadian Perfin companies.



**Figure 1**  
Single head machine  
purchased on eBay

The next step was to find someone to build what I needed. A friend told me about the local community college and its Machine Shop school. I met with them and they said this could be a good fit for a senior student's design project. Unfortunately, after 18 months the school was unable to proceed and a different plan was put in its place.

My next step was to find a local tool design shop to build these parts. A few telephone

calls led to a small two man shop. I met with them and a perfect match was found, as they had built some larger perforating machines in the past. I turned over the parts and my CAD drawing in November of 2014.

The die is a fixed design as you cannot change the letter pattern (See the perfin layout in Figure 2.) The 31 pins are stainless steel. The die consists of three parts: (1) the top part holds the pins which are held in place between two brass plates; (2) the next portion guides the pins and holds them straight with a 0.030 gap for the stamp; and (3) the actual cutting die is on the bottom. In production, the three parts were sandwiched together and drilled at the same time to assure that the pin holes always lined up. I say "drilled" but that's not actually what happens. The initial holes are called hole popping, a 0.020 electrode melts the pin holes, and then a brass wire is inserted thru these holes and a perfect 0.028 hole is burned.



**Figure 2**  
Personal  
Perfin  
R130.5p

Since this was an antique machine, I removed the original dies and made a perfect replacement part so as not to modify the original perfin machine. These original dies can then replace my newly made ones and bring the machine back to its original use.

The total cost was \$700 and took 18 hours to build. Any tool shop with hole popping and wire machines can do this job as it is not difficult to do. If their machines are computer controlled, it would be even easier.

This design has been assigned the number **R130.5p** by the The Perfins Club. Contact Larry Rausch at [stonycwoods840@gmail.com](mailto:stonycwoods840@gmail.com) if you want a stamp punched with my personal pattern.

## Member Want Ads

Want ads are published for members on a space-available basis at the following rates: one insertion - 10 cents per word; three consecutive insertions of the same ad - 20 cents per word. **Members are entitled to one free ad per year.** Neither the Perfins Club nor the Editor accepts responsibility for the validity of the ads. Payment for the ads should be sent to the Editor or by PayPal to [perfin@charter.net](mailto:perfin@charter.net) with prior notification to the Treasurer and Editor.

**Wanted:** Stamps and cover with perfin **S67 (SCC)** with sender The Swedish Chamber of Commerce of the United States of America, New York.  
**Contact:** Stellan Swenson, Odonbärsvägen 32, SE-29341 Olofström, Sweden

**Wanted:** Perfin in the 1948 100th Anniversary of the Poultry Industry (Scott #968). Off cover, mint or used blocks/pairs. Really need covers for exhibit!  
**Contact:** Mike Pappas, (734) 945-0822.  
**Email:** [tjpappas@comcast.net](mailto:tjpappas@comcast.net)

**Wanted: 1936-37 Army Series** (Scott #785-89) with perfins, on or off cover.  
**Contact:** Mick Zais, 1642 Tanglewood Road, Columbia, SC 29204-3308  
**Email:** [mzais@newberry.edu](mailto:mzais@newberry.edu)

**Wanted: Canadian Private Perfins.** Information on E. G. Soltzman Co. (**S201**), the company and the stamps they use, particularly interested in exchanging information on their use of pre-1908 stamps.  
**Contact:** Len McMaster, 27 Fairfield Lane, Capon Bridge, WV 26711  
**Email:** [pegnlen@aol.com](mailto:pegnlen@aol.com)

**Wanted: Air Mail Cover** bearing the Lindbergh Air Mail stamp (Scott #C10) with an **S165 (SKF)** perfin in it, from SKF Industries, Inc., Hartford, Connecticut.  
**Contact:** Stellan Swenson, Odonbärsvägen 32, SE-29341 Olofström, Sweden

## Perfins Club Auction #147 Closes December 31, 2015

**Guidelines:** A minimum bid of \$2.00 applies to every individual lot except as follows: U.S. "B", "B+", and "A" rated patterns, minimum bids for which will be \$6.00, \$18.00, and \$30.00, respectively, and **single U.S. "C" rated perfins, minimum bids for which will be \$2.00.** Lots will be sold to the highest bidder at the following advances over the next highest bidder \$2-\$5 – a \$0.25 advance; \$5-\$20 – a \$0.50 advance; a \$20-\$100 – a \$1.00 advance: \$101 or higher a \$5.00

advance. No unlimited bids accepted. The earlier postmark or email date, will prevail in tie bids All single perfins are complete and in good condition, unless otherwise noted. Straight edges are not considered to be defects. All lots are returnable if misdescribed; this does not apply to large lots or mixtures with the exception of gross miscounts.

**Bid by lot #.** Please put your mailing address and email address on your bid sheet.

**Good Luck!**

**Send all bids to: Joe Giampietro, 6478 State Road, G-10, Parma, OH 44134-4166 – USA  
Email: [mo13jo@aol.com](mailto:mo13jo@aol.com)**

### Abbreviations used:

ADD – All Different Designs  
DDF – Design Different Face  
MDF - Mostly Different Face

PREPER – Precancelled Perfin  
SE – Straight edge(s)  
(?h) - Number of missing pins

Scott #s are used. The pattern numbers and ratings for U.S. perfins are from the 1998 *Catalog of United States Perfins*, including A&C#1, #2, and #3.

Lot	Description	Rate	Lot	Description	Rate	Lot	Description	Rate
1	A112/499 small tear	B	19	C63/C11	E	34	H126/499	B
2	A112/504	B	20	C97 scrape	C (se)	35	I26.5	C+
3	A133/332	B (se)	21	C171/332	B	36	I91-11/398	D
4	A141	C	22	C235.5/583 3h open/edge	B	37	J10	C+ (se)
5	A163A/637	C	23	C234/C31	D+	38	L13.5?425	B+ (se)
6	A164/499 1h off stamp	B	24	C349/319	B (se)	39	L107/333	B (2h-se)
7	A181?638	C	25	D126	B (se)	40	L110/499	A (se)
8	A192/638	C	26	E9 Btm cnrs gone	C	41	M127/499	B+ (se)
9	A202/638	B	27	E45/558 1h open	B	42	M301A/406	B
10	A202/684	B	28	F35/807	C	44	P186/634	B
11	A253/504 cpl bad perfis	B	29	F83/332 bad corner	B	45	R32	B (1h)
12	B13	B+(2se)	30	G53	C+	46	R66A/568	B
13	B100A/333	B+	31	G110A crease	B	47	R118.5	B
14	B169	B	32	G190	C		S204A/499	B (4h)
15	B170	C+	33	G203	G			
16	B227	C+						
17	B289/591	C						
18	C19/499	C+						

*Continued on Page 118*

## Perfins Club Auction #147 (cont.)

Lot	Description	Rate	Lot	(Lots of 3)	C Rated	Lot	(Lots of 3)	C Rated
48	T97A/557 1h & 3 damage	B+	65	A5,A22,& A42		85	C176,C179,& C244	
49	W38/707	A (3h)	65	A72,A87.4A,& A124		86	C261,C269,& 290	
50	W41 close to edge	C+	65	A141,A153, & A182		87	C329,C330,& C351	
51	W45	B (10h)	65	A183,A188,& A194		88	C391,C405,&C410	
52	W72.44A/901	B	65	A197,A221-13, & A221-14		89	C429,D71,& D74	
53	W72.49/814 split on pair	B+	65	A221-44A,A222, & A261		90	D76,D85,& D97	
54	W94	B (2h)	65	A270-10,A276, & A278		91	D103,D135,& D147.5	
55	W132/508	B	65	A289, A289A,& B19		92	E16,E43,& E61	
56	W188 6h & on edge	B (se)	65	B56,B61,& B87		93	E96A,E113,& E118	
57	W199.5	B	65	B96,B104,& B118-3		94	F106,F112,& F117	
58	W199.6 left sd clipped	B (1h)	65	B116-5,B116-17,& B119		95	F119,F126,& F155	
59	W203-2.5	B	76	B123,B167,& B182		96	F176,F199,& F210	
60	W226/901	C+	77	B187,B192,& B196		97	F220,F222,& F226	
61	Y10	C+	78	B222,B240,& B244		98	F231,G9,& G15	
62	Des23/375	B (5h)	79	B247,B247.5,& B265		99	G19,G28,& G40.1	
63	Des31/556	C+	80	B266,C4,& C5		100	G72-2,G72-37,& G90	
64	Des46/1871	D (nh-pr)	81	C20,C27,& C49		101	G155.5,G166.5,& G175	
			82	C61,C65,& C74		102	G179,G190,& G191	
			83	C93,C100,& C106		103	G202,G211,& H6	
			84	C113,C163,& C168		104	H31,H35,& H47	
			<b>End of Auction #147 Good Luck with Your Bids!!</b>			105	100 all dif US	
						106	160 G.B.Machins all dif	

## APS Grand Rapids

Jerry Hejduk (LM#3710)



Considerable interest in collecting perfins was shown by attendees at the APS Stamp Show in Grand Rapids, Michigan. The picture was taken (unknown to me) by Ken Martin, APS Executive Director and Perfins Club LM#144.

I am shown partially blocked by the attendees, to the right, while "new member" Jeanne Hejduk (#4094) appears to the left, also partially blocked.

---

# Secretary's Report

Ken Rehfeld (#3394)

## New Members:

#4094 Jeanne Hejduk  
21039 Royal St Georges Ln  
Leesburg FL 34748-7760  
[hejdukjg@comcast.net](mailto:hejdukjg@comcast.net)

Beginner, Cuba  
Annual Meeting

#4095 Daniel Milone  
21 Oak Crest Dr  
Brookfield CT 06804-2324  
[danmilo@msn.com](mailto:danmilo@msn.com)

Beginner, Precancel, CT, NJ RI  
Annual Meeting

#4096 Larry Greenfield  
2604 Laguna Dr, 2nd Fl  
Endwell NY 13760-7213  
[lgreenfi@binghamton.edu](mailto:lgreenfi@binghamton.edu)

Intermediate, covers  
Bob Szymanski

#4097 Douglas Peterson  
10 Broadway  
West Milford NJ 07480-4318  
Intermediate, Cuba  
Annual Meeting

#4098 Rob Loeffler  
111 Mandeville Ave  
Pequannoch NJ 07440-1817  
[rdleoffler@optonline.net](mailto:rdleoffler@optonline.net)

Advanced, Canal Zone  
Annual Meeting

#4099 Mary Vogenberger  
3368D Sunset Key Circle  
Punta Gorda FL 33955-1970  
Beginner, U.S.  
Web

#4100 Michael Pappas  
420 Adams St  
Plymouth MI 48170-1212  
[tupappas@comcast.net](mailto:tupappas@comcast.net)  
Advanced, U.S. #968  
Stamp Show, Grand Rapids

#4101 Roger Smit  
3920 Colby Ave SW  
Wyoming MI 49509-3951  
[rogersmitmi@aol.com](mailto:rogersmitmi@aol.com)  
Beginner, US, Polan, Romania, Netherland, G.B.  
APS stamp Show

#4102 George Bovis  
19 Freeman St  
Arlington MA 02474-8522  
[gb101343@hotmail.com](mailto:gb101343@hotmail.com)

Beginner, (dealer)  
APS Stamp Show

#4103 Alfred DeBurro  
PO Box 316  
Salem NH 03079-0943  
[aljelaje@aol.com](mailto:aljelaje@aol.com)

Beginner, US Europe  
Stamp show, Stunzi

## Welcome Back:

#3502 Larry Gottlieb  
9 Kingsbury Ct  
Madison WI 53711-2515

## Address Change:

#3760 William R. Packard  
42841 W Misty Morning Ln  
Maricopa, AZ 85138-8558

## Members dropped for non payment of dues:

2979 Neil Abbey  
4066 Richard Averman  
4073 Harley Bissell, Jr  
4059 John Brain  
2617 James Fattaleh  
3960 John Gable III  
1290 Richard Gray  
3200 Leland Huss  
2752 Hermann Kohlmeyer  
3348 Dominick Labarbiera  
2989 David Larkey  
4075 Donald Lee  
900 Robert McKee  
3650 Jack Myers  
4044 Pat Norman  
3941 Richard Podwell  
3639 Chris Pollock  
3035 Blair Stitt  
4043 Thomas Tillarpaugh

**Membership 433**

### Dues

#### Dues are payable by June 30 of each year to the Secretary

Please look at your mailing address on this *Bulletin*. If the date above your name is appears in red, then you need to renew. Some of you are paid through 2016 and, of course, you will not need to pay dues this year.

> MAKE THE CHECK OUT TO "THE PERFINS CLUB" << Do not make the check payable to the Ken Rehfeld. Then send it to me, Ken Rehfeld, P.O. Box 125, Spokane Valley, WA 99016-0125 USA.

You may also pay your dues via PayPal

to: [perfin@charter.net](mailto:perfin@charter.net). In the information line, please make sure you indicate this is for dues and give your member number so we can correctly mark you paid.

We will also be asking Life Members for confirmation. Please return this to Ken Rehfeld or send him email at [kenrehfeld@comcast.net](mailto:kenrehfeld@comcast.net). Life Members who wish to receive the Bulletin by first class mail should send payment before the end of July—US is \$5, Canada \$7, Foreign \$10.

Thanks!

Item	U.S.	Canada	Other Non-U.S.
Annual Dues	US\$15	US\$18	US\$25
For First Class Mail, including Life Members, add	US\$5	US\$7	US\$10

Life Memberships are available as shown below. No dues to pay again! Contact Ken Rehfeld if interested.

Age	U.S.	Canada	Other Non-U.S.
54 years or less	US\$375	US\$450	US\$625
55 through 69 years	US\$300	US\$360	US\$500
70 years +	US\$225	US\$270	US\$375